



Construction Product Guide

Products for the suspension of building services



Find us in

MASTERSPEC
building specs done right



Contents

About

About Gripple page 4

Applications

Piping page 8
 HVAC page 10
 Electrical page 12
 Lighting page 14
 Modules page 16
 Signage page 18
 Acoustics page 20
 Black Line page 22
 Other Applications page 24

Products

Standard Hanger page 28
 Express Hanger page 29
 Angel Hanger page 30
 Stainless Steel Hanger page 32
 UniGrip Hanger page 34
 Duct Trapeze Hanger page 36
 Butterfly Trapeze Hanger page 37
 Fast Trak page 38
 Y-Fit & Y-Fit Accessory Hangers page 40
 Cable Strut & C-Clip Hanger page 42
 QT Pipe Clamp page 44
 Pipe Support Bracket page 45
 QT Compact Clamp page 46
 Low Profile Pipe Bracket page 47
 Threaded Clamp page 48

End Fixings

Loop page 52
 Stud page 52
 Toggle page 53
 Hook page 53
 Mini Hook page 54
 End Stop page 54
 Barrel page 55

Top Hat Barrel page 55
 Eyelet page 56
 45° Eyelet page 56
 90° Eyelet page 57
 Cladding Hook page 57
 Ring Anchor page 58
 Ceiling Anchor page 58
 Karabiner page 59
 C-Clip page 59
 Shot Fire page 60
 Eyelag page 60
 Twist Clip (White) page 61
 Swivel Toggle page 61
 Metal Deck Insert page 62
 Spider Insert page 63

Accessories

Anchoring Solutions page 66
 Beams & Purlins page 68
 Brackets & Attachments page 69
 Adapters page 72
 Tools & Finishing Accessories page 74

Technical

Technical Services page 78
 Hanging at Angles page 80
 Cable Construction & Cross Sections page 80
 Ductwork Hanger Data page 81
 Pipe Support Spacing Data page 82
 Usage Recommendations page 83
 Quality & Approvals page 83



HEATING, VENTILATION, FAN COIL UNITS, CHILLED BEAMS, DUCTWORK, SOLAR PANELS, CONDUIT, AIR CONDITIONING UNITS, MECHANICAL, PIPING, LADDER TRAY, CABLE BASKET, STRIP LIGHTING, HIGH BAY FLUORESCENTS, TROFFER SUPPORTS, CATENARIES, SHOPFITTING, SIGNAGE, ACOUSTIC BAFFLES, SUSPENDED CEILINGS, BRACING.

About Gripple

Gripple is an employee-owned company that prides itself on product innovation and a culture of charity and fun. Of the 500-strong Gripple employees working worldwide, over 100 are dedicated to serving North America. Our Territory Managers here are experts in providing suspension solutions for HVAC, Mechanical, Electrical, Lighting, Acoustics, and Signage. And our manufacturing facility and support teams in Aurora, Illinois enable us to offer flexible, centralized service to the US, Canada, and Mexico.



“...Gripple’s capabilities are recognized, admired, and trusted worldwide.”

From contractors to consultants, we offer:

- Material Take Offs (MTO's) – we'll advise on what you need and where
- CAD drawings
- Bill of Materials (Gripple product & quantities)
- On-site visits to discuss potential suspension solutions
- Product training – for specific installations or for newest products
- Regular on-site advice until job completion
- Fast product delivery



What we do

Time Savings

Save up to 85% on installation times for your suspended services when you use Gripple’s cable hanger kits, as compared to traditional suspension methods. Not only is the installation faster, no pre-work, such as cutting or filing, is required.

Health & Safety

Gripple cable hanger kits are ready-to-use straight from the box, removing the need for potentially hazardous cutting on site. One box of Standard No.2 cable hanger kits weighs just 17 lbs, doing the same job as 330 lbs of threaded rod and strut. Not only is the weight and bulk of materials to carry reduced, but also the time spent working at heights.

CO₂ Savings

For every foot of Gripple cable specified to replace threaded rod, it is estimated that a savings of 2.7 lbs of embodied CO₂ is realized. This equates to a total embodied CO₂ saving of up to 95% when switching from threaded rod to Gripple cable hangers.

Aesthetics

Gripple cable hanger kits are lightweight and virtually invisible from the ground. Comparing 1/8" cable to 3/8" threaded rod, the difference is easy to see. With a trend towards exposed services, Gripple cable kits enhance the aesthetics significantly, especially in retail environments. We also offer a range of black cable kits ideal for cinemas, theaters and other areas where the ceiling is exposed or painted black (See page 22).





Applications

Piping	page	8
HVAC	page	10
Electrical	page	12
Lighting	page	14
Modules	page	16
Signage	page	18
Acoustics	page	20
Black Line	page	22
Other Applications	page	24

Piping



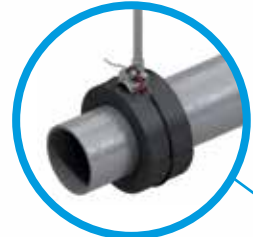
Pipe Bracket Beam Clamp
Page 68



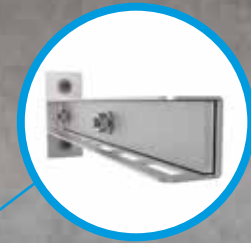
QT Compact Clamp & Low Profile Bracket
Page 46-47



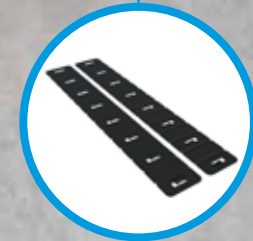
Insulation Collars
Page 70



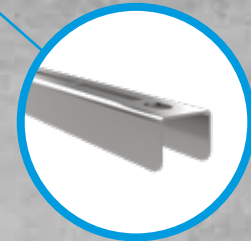
UniGrip QT
Page 35



Wall Bracket
Page 69



Spreader Band
Page 69



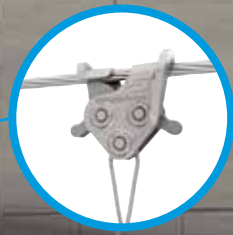
Pipe Bracket
Page 45

The Gripple® range of supports and hangers for piping applications has been developed to provide a fast and versatile solution for suspending all types of pipe and mechanical installations.

Gripple products are designed to save time & labor and reduce costs by making the installation quick and easy, allowing a contractor to be more competitive by moving onto their next job faster. Supplied in ready-to-use kits, the products in this range require no on-site cutting and eliminate the need for fabricating pipe bracket assemblies, offering enormous health and safety benefits for your project.

Products shown are for internal use only. Images shown for illustrative purposes only. Please refer to product installation instructions for full information.

HVAC



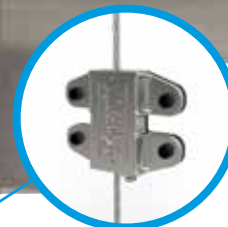
C-Clip
Page 42



Cable Strut Kit
Page 42



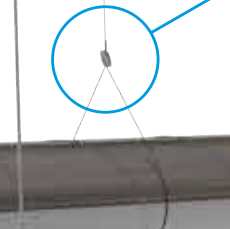
Standard Hanger
Page 28



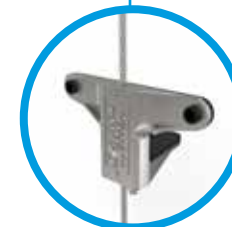
Butterfly Trapeze Hanger
Page 37



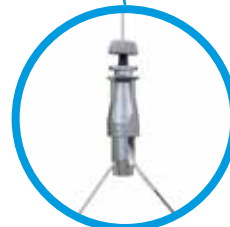
FastTrak
Page 38



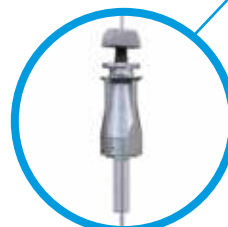
Express Hanger
Page 29



Duct Trapeze Hanger
Page 36



UniGrip Y-Fit
Page 35



UniGrip Standard
Page 34



Calibra
Page 35

Products shown only for internal use. Images shown for illustrative purposes only. Please refer to product installation instructions for full information.

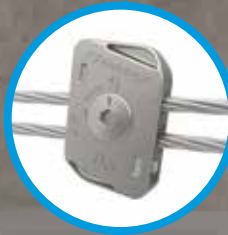
The Gripple® range of hangers for HVAC applications has been developed to provide a fast and versatile solution for suspending ductwork, heaters, air conditioning, radiant panels, and plenum boxes.

Our products are manufactured in the UK and USA, and are designed to save you time and labor costs, thus improving the efficiency of your installation. Unlike traditional suspension methods, Gripple kits do not require cutting or filing. Gripple suspension solutions offer aesthetic design without compromising on strength, and are supplied in ready-to-use kits with a choice of cable length and end fixing.

Electrical

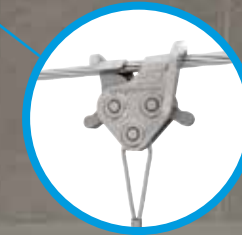
Cable Strut Kit

Page 42



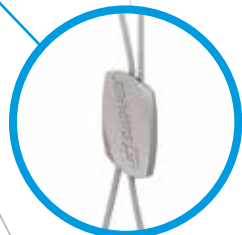
C-Clip

Page 42



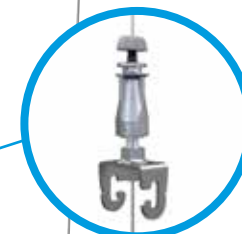
Standard Hanger

Page 28



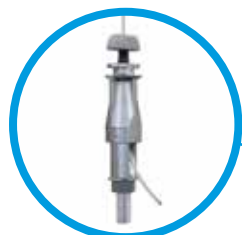
UniGrip w/ Cable Basket Adapter

Page 35



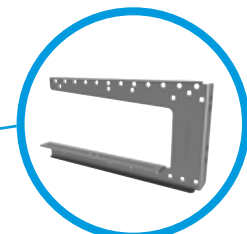
UniGrip Side Exit

Page 35



G-Bracket

Page 70



The **Gripple®** range of supports and hangers for electrical applications has been developed to provide a fast and versatile solution for suspending all types of electrical containment.

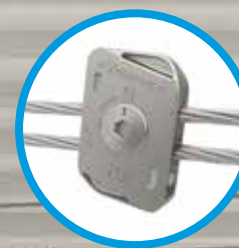
Gripple products are designed to save time & labor and reduce costs by making the installation quicker and easier. Supplied in ready-to-use kits, the products in this range are lightweight, require no on-site cutting, and reduce the time spent working at heights, offering enormous health and safety benefits for your project.

Products shown are for internal use only. Images shown for illustrative purposes only. Please refer to product installation instructions for full information.

Lighting

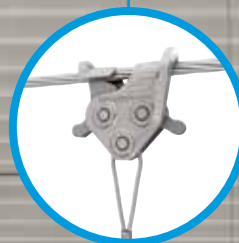
Cable Strut Kit

Page 42



C-Clip

Page 42



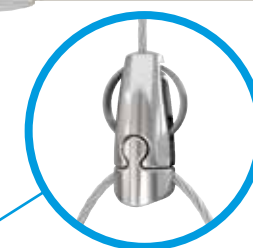
Express Hanger

Page 29



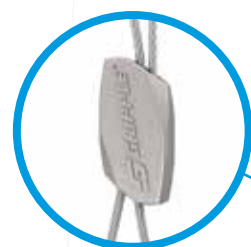
Angel Hanger

Page 30



Standard Hanger

Page 28



The Gripple® range of suspension solutions for lighting are manufactured in the UK and USA, and have been designed to save you time, money, and labor by improving the efficiency of the installation process. Unlike traditional suspension methods, Gripple kits eliminate on-site cutting or filing, resulting in much better health and safety benefits for your team.

Our products offer a sleek, professional and discreet finish, without compromising on strength, and are supplied in ready-to-use kits with your choice of end fixing and cable length.

Angel has a wide range of feet options available to suit your lighting application.

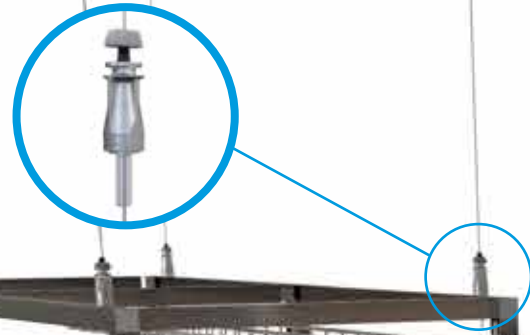
See page 31 for details.



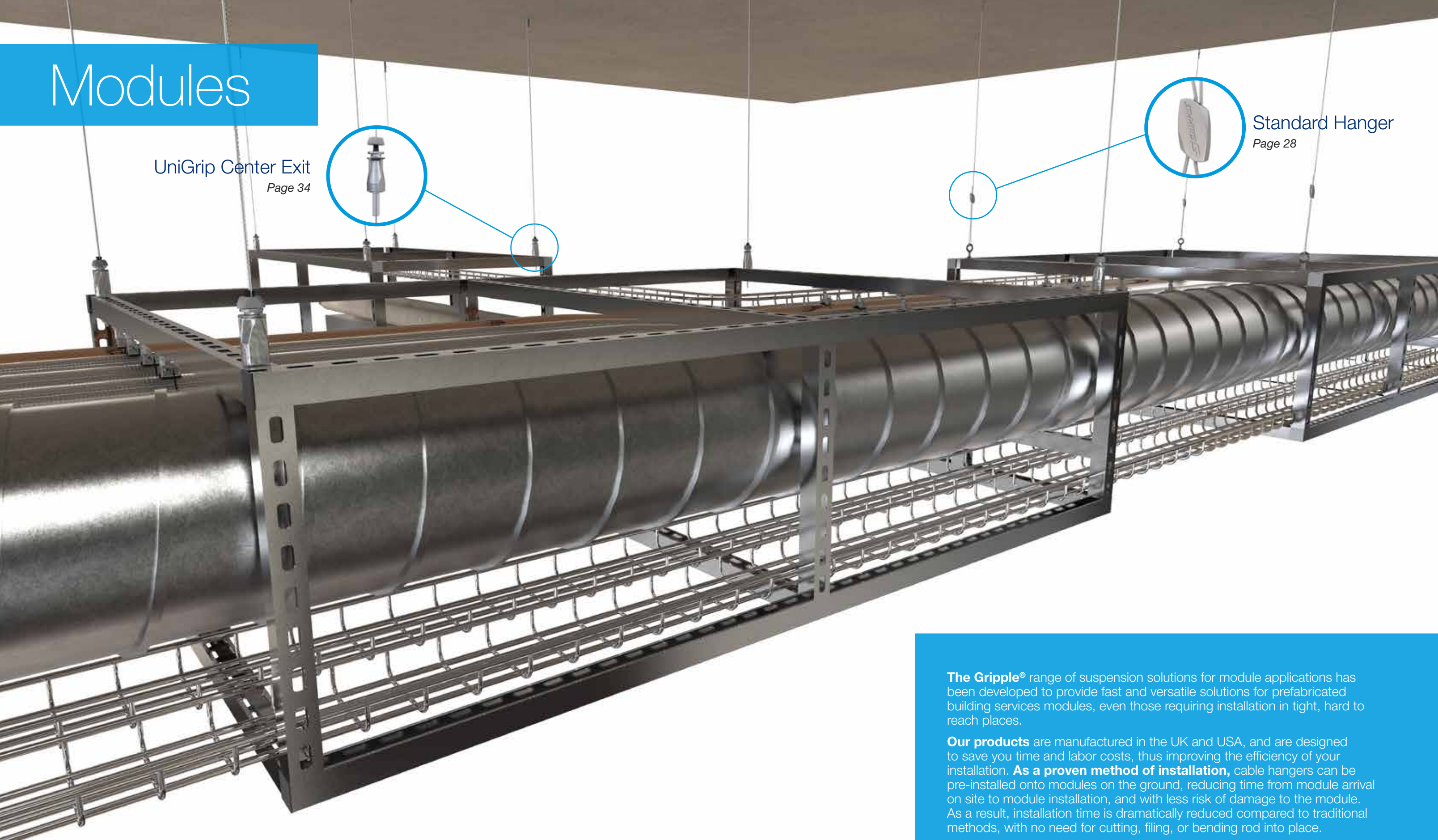
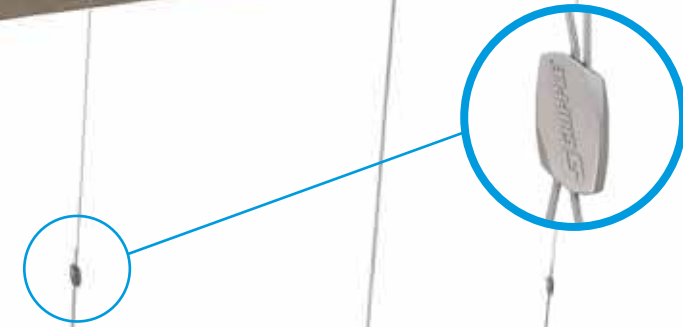
Products shown only for internal use. Images shown for illustrative purposes only. Please refer to product installation instructions for full information.

Modules

UniGrip Center Exit
Page 34



Standard Hanger
Page 28



The Gripple® range of suspension solutions for module applications has been developed to provide fast and versatile solutions for prefabricated building services modules, even those requiring installation in tight, hard to reach places.

Our products are manufactured in the UK and USA, and are designed to save you time and labor costs, thus improving the efficiency of your installation. **As a proven method of installation,** cable hangers can be pre-installed onto modules on the ground, reducing time from module arrival on site to module installation, and with less risk of damage to the module. As a result, installation time is dramatically reduced compared to traditional methods, with no need for cutting, filing, or bending rod into place.

Products shown only for internal use. Images shown for illustrative purposes only.
Please refer to product installation instructions for full information.

Signage



Angel Hook

Page 31



Angel for Signage

Page 31

Standard Hanger

Page 28



Angel has a wide range of feet options available to suit your signage application.

See page 31 for details.



Express Hanger

Page 29



The Gripple® range of signage hanger products has been developed to provide a complete solution for the suspension of all forms of signage.

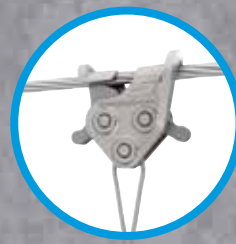
The variety of kits allows for complete flexibility and adjustability, without the use of additional tools. The product design provides a sleek, professional finish, without compromising on strength.

Our kits have been designed to save you time and labor by making installation quick and easy.

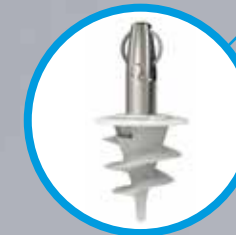
Products shown only for internal use. Images shown for illustrative purposes only. Please refer to product installation instructions for full information.

Acoustics

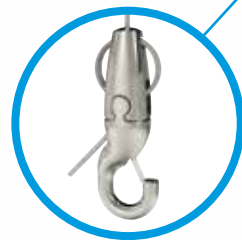
Cable Strut &
C-Clip Hanger
Page 42



Angel Helix
Page 72



Angel Hanger
Page 31



The **Gripple**® range of hangers for acoustic applications are manufactured in the UK and USA, and have been designed to save you time, money, and labor by improving the efficiency of the installation process. Unlike traditional hanging methods, Gripple kits require no on-site cutting or filing, and offer enormous time-saving benefits for your project.

Gripple products can fit directly into acoustic baffles, panels, and suspended ceilings, offering a sleek, professional and discreet finish without compromising on strength. All products are supplied in ready-to-use kits with your choice of end fixing and cable length.

Products shown only for internal use. Images shown for illustrative purposes only.
Please refer to product installation instructions for full information.

Black Line

Gripple's ready-to-use suspension kits now come with the option of a black finish to further enhance the aesthetic appeal of the range.

The slim and unobtrusive aesthetics of Gripple's cable suspension systems have always proved perfectly suited to the design of many modern buildings, either where building services in the ceiling space are left exposed and visible, or for specific applications such as the suspension of lighting.

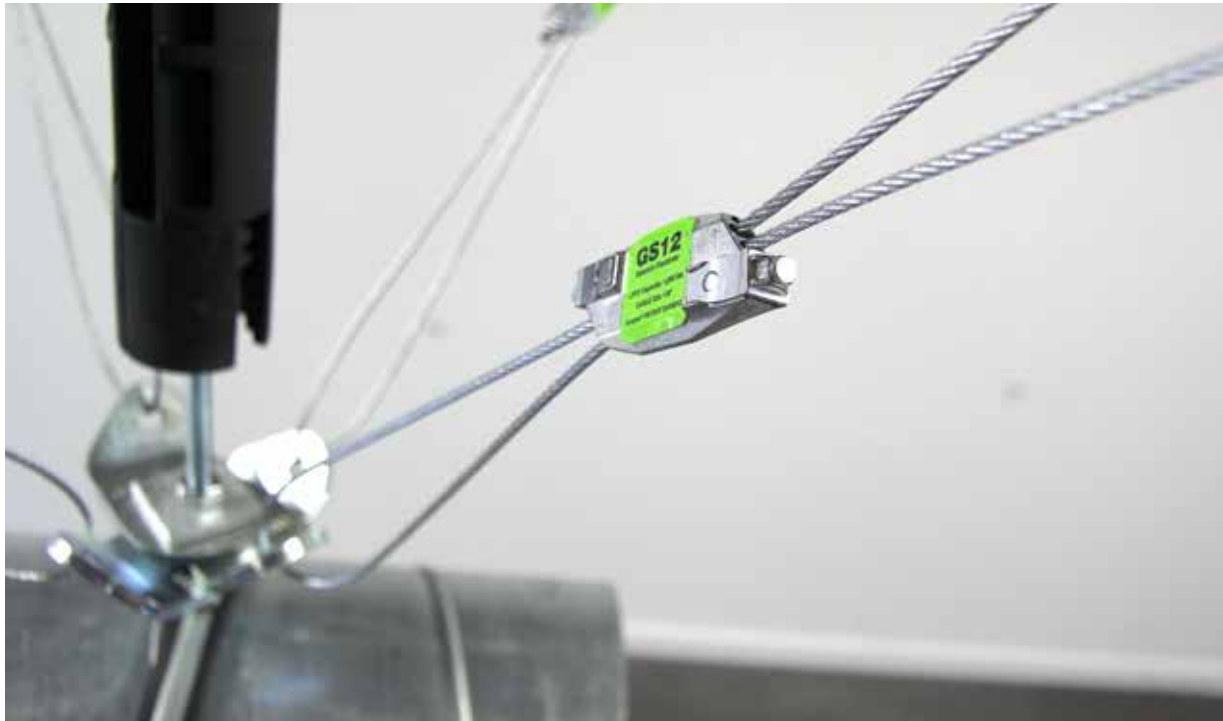
The new Black Line of products aims to build on this success and will be ideal for use in a wide variety of environments where aesthetics and dark ceilings are prevalent, including retail spaces, theaters, exhibition venues, and concert halls.

Each ready-to-use kit is supplied with a black cable, black fastener, and your choice of black end fixing.

For further information please call 1 866 474 7753 or email grippleinc@gripple.com

Products shown only for internal use. Images shown for illustrative purposes only.
Please refer to product installation instructions for full information.

Other Applications



Seismic Bracing & Force Protection



Seasonal Decoration (External Cable Strut)



Rooftop Bracing Solutions



Solar Panel Installation



Products

Standard Hanger	page 28
Express Hanger	page 29
Angel Hanger	page 30
Stainless Steel Hanger	page 32
UniGrip Hanger	page 34
Duct Trapeze Hanger	page 36
Butterfly Trapeze Hanger	page 37
Fast Trak	page 38
Y-Fit & Y-Fit Accessory Hangers	page 40
Cable Strut & C-Clip Hanger	page 42
QT Twist Clamp	page 44
Pipe Bracket	page 45
QT Compact Clamp	page 46
Low Profile Bracket	page 47
Threaded Clamp	page 48

Standard Hanger

Cable hanger kit containing the original Gripple HangFast fastener, for suspending a variety of HVAC, piping, lighting, and electrical services.

- The only Gripple Hanger available in sizes No.1 thru No.5, with Safe Working Loads from 25 thru 715 lbs per hanger
- Ideal for fast suspension of any suspended service
- Up to 6 times faster to install than traditional methods
- Versatile and simple to use
- Strong, safe, and industry approved
- Aesthetically discreet and lightweight
- Fastener can be released with a Release Key to adjust or level the height of the service



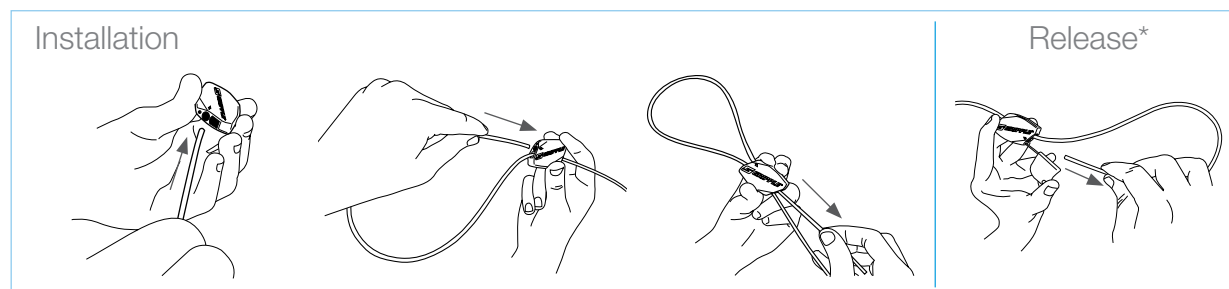
Available in sizes No.1 - No.5



Supplied as ready-to-use kits with a length of cable, Standard fastener, and end fixing of your choice.

5:1 SAFETY FACTOR	No.1	No.2	No.3	No.4	No.5
LOAD RATING PER HANGER	25 lbs	100 lbs	200 lbs	495 lbs	715 lbs

END FIXINGS PAGE 51	ACCESSORIES PAGE 65	TECHNICAL PAGE 77	HANGER KIT CODES PAGE 33
------------------------	------------------------	----------------------	-----------------------------



* When releasing: 1. Remove load, 2. Insert Release Key into hole, 3. Pull tail wire out

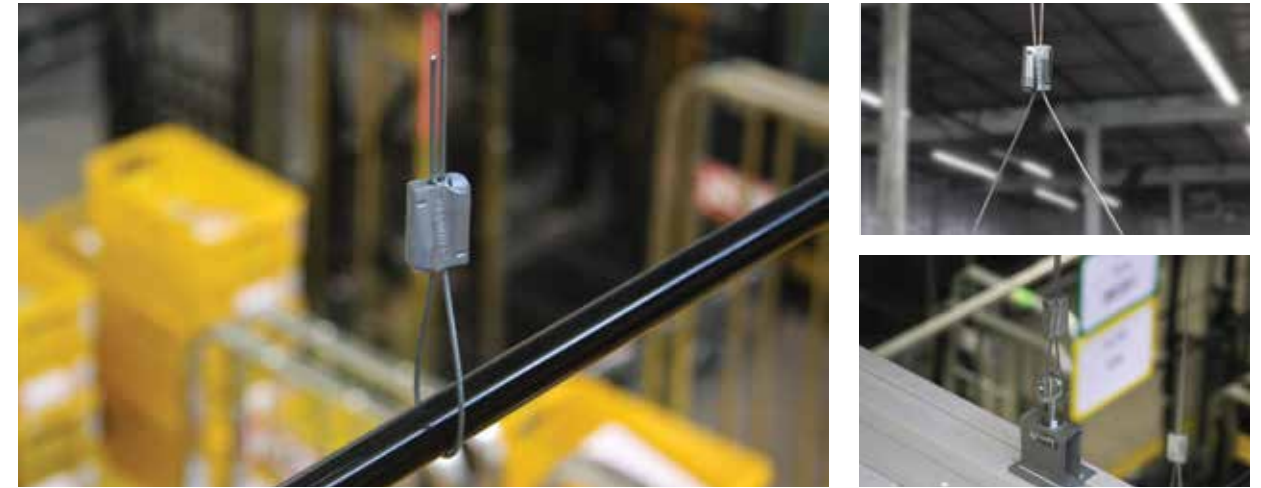
Express Hanger

For the fast suspension of a variety of services, designed with an easy push-button release mechanism.

- The Express No.1 is ideal for signage, shopfitting, lighting, and other lightweight fixtures
- The Express No.2 is ideal for mechanical and electrical services
- Up to 6 times faster to install than traditional methods
- Discreet and aesthetic design
- Ergonomic push buttons are easy to use
- No Release Key required to adjust or level the service



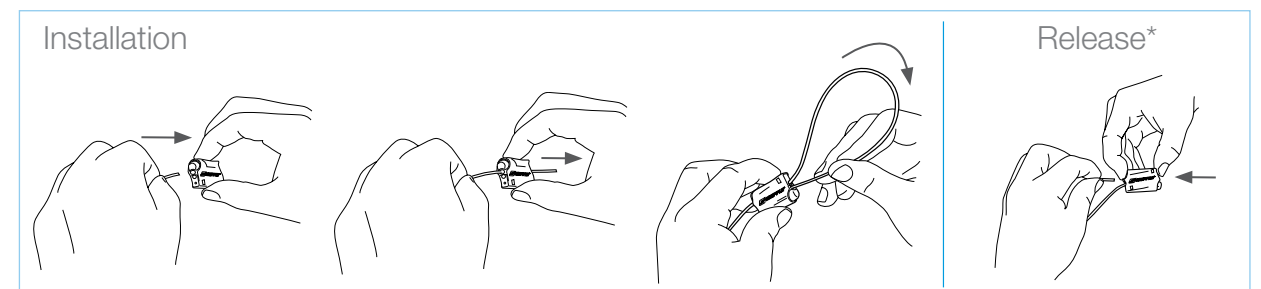
Available in sizes No.1 - No.2



Supplied as ready-to-use kits with a length of cable, Express fastener, and end fixing of your choice.

5:1 SAFETY FACTOR	No.1	No.2
LOAD RATING PER HANGER	33 lbs	100 lbs

END FIXINGS PAGE 51	ACCESSORIES PAGE 65	TECHNICAL PAGE 77	HANGER KIT CODES PAGE 33
------------------------	------------------------	----------------------	-----------------------------



* When releasing: 1. Remove load, 2. Push release buttons, 3. Pull tail wire out

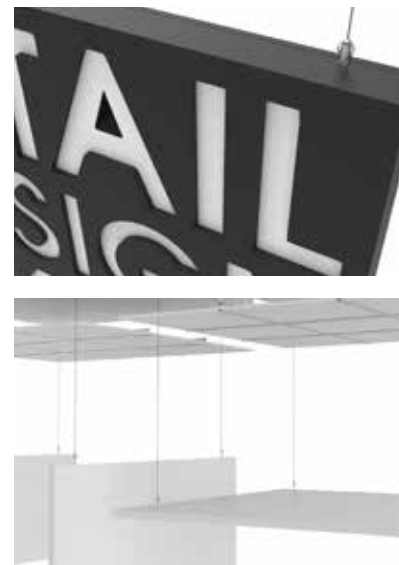
Angel Hanger

Designed for architectural lighting suspensions, signage, acoustic baffles, and installations where aesthetics are important.

- Simple one handed operation for easy height/leveling adjustment by pressing in on "wings"
- Contemporary design to complement the overall suspension
- Extensive range of cable end fixing options allowing installation into most structure or ceiling types
- Variety of feet options to enable attachment in different ways
- Uses 1/16" cable to make the suspension as visually discreet as possible



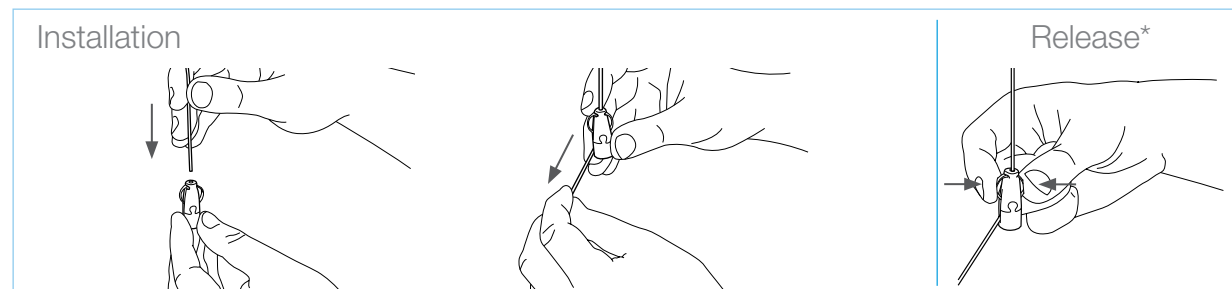
Available with a range of feet options



Supplied as ready-to-use kits with a length of cable, Angel fastener, and end fixing of your choice.

5:1 SAFETY FACTOR	No.1
LOAD RATING PER HANGER	33 lbs

END FIXINGS PAGE 51	ACCESSORIES PAGE 65	TECHNICAL PAGE 77	HANGER KIT CODES PAGE 33
------------------------	------------------------	----------------------	-----------------------------



* When releasing: 1. Remove load, 2. Squeeze wings, 3. Raise or lower on cable

Angel Feet Options

The Angel fastener is extremely versatile, with a range of feet options available to suit every application.

Y-FIT

- Dual fixing points for balance
- Ideal for suspending light fixtures
- 6", 12" or 18" leg lengths as standard
- Various end fixing options for leg attachment to service



SIGNAGE

- Ideal for signage up to 3/16" in thickness
- Grub screw for direct attachment
- Side cable exit



HOOK

- Ideal for light fittings, signage, or for use with eyebolts, spring, and wire anchors
- Integrated hook with 1/8" clearance
- Safety clasp for security
- Side cable exit



SWIVEL

- Swivel feature for suspension at angles up to 90°
- Available in 1/4" thread
- Female: maximum insertion depth 1/4"
- Male: 9/16" exposed thread length as standard
- Side cable exit



SIDE EXIT FEMALE

- Female threaded foot, ideal for direct attachment to light fittings, frames and acoustic panels
- Available 1/4" thread
- Maximum insertion depth 1/4"
- Side cable exit



KNOCKOUT

- Ideal for strip lighting with standard 7/8" knockout holes
- Slots into knockout centers and twists to lock into place
- No tools needed, or the need to remove the back of the fixture



SIDE EXIT MALE

- Threaded male foot, ideal for direct attachment to light fittings, frames and acoustic panels
- Available in 1/4" thread as standard.
- 9/16" exposed thread length as standard, custom lengths on request
- Side cable exit (Center exit also available)



4 POINT

- Ideal for light panels with multi fixing points
- Perfect for even balance of square modules
- Side wire exit
- Four Point disc diameter 0.63"



HELIX

- Ideal for use with acoustic panels made from fiberglass and dense foam
- Angel connects to Helix with quick twist for faster installation



Supplied as ready-to-use kits with a length of cable, Angel Hanger, and end fixing of your choice.

Stainless Steel Hanger

Used to suspend a variety of mechanical and electrical services in the food industry and high humidity environments.

- Stainless steel body and springs are corrosion resistant and long-lasting
- Ceramic rollers for extra strength and corrosion resistance
- Aesthetically discreet and lightweight
- Available in two sizes load rated up to 200 lbs SWL
- Available for use with Loop, 1/4" Stud, Hook, Y-Hook, Toggle, and Y-Toggle end fixings
- Fastener can be released with a Release Key to adjust or level the height of the service
- Like all Gripple hangers, NOT suitable for use in chlorinated or swimming pool environments



Available in sizes No.2 - No.3

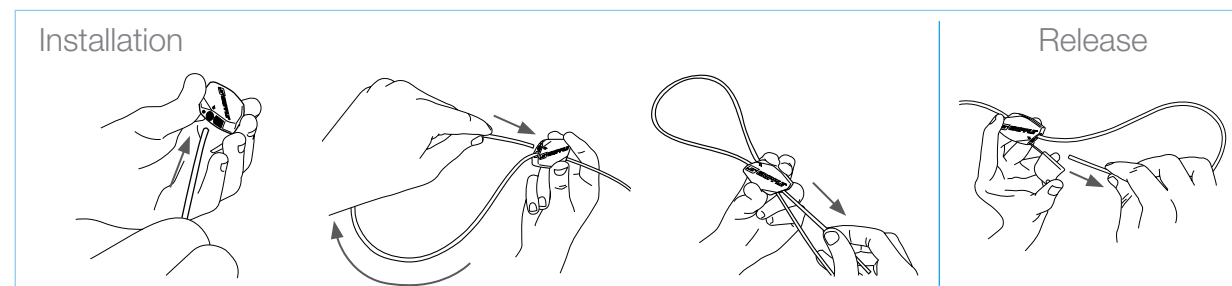


Supplied as ready-to-use kits with a length of cable, Stainless Steel fastener and end fixing of your choice.

5:1 SAFETY FACTOR LOAD RATING	No.2	No.3
	100 lbs	200 lbs

END FIXINGS PAGE 51	ACCESSORIES PAGE 65	TECHNICAL PAGE 77	HANGER KIT CODES PAGE 33
------------------------	------------------------	----------------------	-----------------------------

* When utilized in conjunction with the Stainless Steel Hook the Safety Factor becomes 4:1.



* When releasing: 1. Remove load, 2. Insert Release Key into hole, 3. Pull tail wire out.

Hanger Kit Codes

How to work out your unique product code

1 CHOOSE YOUR PRODUCT

Standard Hanger No.1 HF1	Standard Hanger No.2 HF2	Standard Hanger No.3 HF3	Standard Hanger No.4 HF4	Standard Hanger No.5 HF5	Express No.1 XP1	Express No.2 XP2	Angel Male Side Exit AL1-SM14	Angel Male Center Exit AL1-CM14
Angel Swivel AL1-SF1/4W AL1-SM1/4W	Angel Female AL1-SF14	Angel Hook AL1-ISH	Angel Y-Fit AL1-YTG 300* *Also available in 150 and 460 mm leg lengths.	Angel 4-Point AL1-FPTG300	Angel Signage AL1-SL5	Angel Knockout AL1-KO	Stainless Steel Hanger No. 2 HF2	Stainless Steel Hanger No. 3 HF3

2 CHOOSE YOUR END FIXING

Loop LG	Stainless Steel Loop LS	Stud S*G	Stainless Steel Stud SQS	Toggle TQG TG	Stainless Steel Toggle TS	Hook HG	Stainless Steel Hook HS	Mini Hook MHG
			"	"				
Eyelet EYQG	45° Eyelet EY45/3/8G	90° Eyelet EY90*G	C-Clip 1/8" CC-1/8	C-Clip 1/4" CC-1/4	Top Hat Barrel BB14	Barrel B*G	End Stop EG	Cladding Hook CHG
Ceiling Anchor CWHQ	Swivel Toggle STG For use with Spider and Metal Deck Insert only	Spider Cast-in-Place Insert SBK Standard SBKT Threaded * Add the code SBK or SBKT after cable length, for example: HF2-STG-5FT-SBK	Metal Deck Insert MDI-Y * Add the code MDI-Y after cable length, for example: HF2-STG-5FT-MDI-Y	Karabiner KG	Shot Fire SF35	Shot Fire for Post Tension Concrete C945	Shot Fire for Post Tension Concrete NS90	

* Stud available in 1/4" or 3/8". Barrel available in 1/4" or 3/8". 90 Degree Eyelet available in 1/4" or 3/8". In place of asterisk in code, enter Q for 1/4" or 3/8 for 3/8".

3 CHOOSE YOUR CABLE LENGTH

5FT	10FT	15FT	20FT	30FT
------------	-------------	-------------	-------------	-------------

Enter your unique product code (e.g. **XP2-LG-10FT**):

□□□□□□□□ - □□□□□□□□ - □□□□□*

PRODUCT	END FIXING	CABLE LENGTH
---------	------------	--------------

For further product information please call 1 866 474 7753 or visit our website www.gripple.com

UniGrip Hanger

Designed for fast suspension of cable containment, piping, ductwork, HVAC systems and modules.

- Enhanced load performance
- Three times lighter than the Trapeze Plus product it succeeds
- Larger button delivers easier, one handed adjustment
- Locking indicator now offers visible certainty
- Ideal for creating multi-tiered installations
- Ideal for use with Gripple Pipe Bracket and QT Universal Clamp for piping suspensions

NEW!!



Available in sizes No. 2 - 4

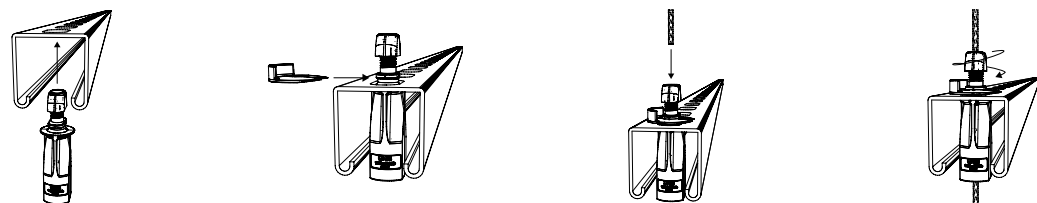


Supplied as ready-to-use kits with a length of cable, UniGrip Hanger, and end fixing of your choice.

5:1 SAFETY FACTOR LOAD RATING*	No.2	No.3	No.4
	120 lbs	240 lbs	550 lbs

* When UniGrip is utilized in conjunction with the Hook or 90° Eyelet end fixings the Safety Factor becomes 4:1.

Installation



UniGrip Foot Variants

The range of UniGrip 'feet' ensures the product suits all possible building service applications.

STANDARD

- **Ideal for:** Piping, rectangular ductwork, air conditioning units, electrical containment, heating and ventilation units, multi-tier applications.



QT

- **Ideal for:** Piping, electrical containment, ductwork and other mechanical services when used with Gripple Pipe Brackets.



CENTRAL EXIT

- **Ideal for:** Piping, rectangular ductwork, air conditioning units, electrical containment, heating and ventilation units, chilled beams, busbar, modules, multi-tier applications.



HOOK

- **Ideal for:** Heating and ventilation units, heavy duty signage, cable basket/tray, radiant panels, chilled beams.



SIDE EXIT

- **Ideal for:** Suspended ceilings, heavy duty lighting, busbar, plenum boxes, single pipe runs.



CALIBRA

- **Ideal for:** Radiant panels, chilled beams, heating, ventilation and cooling units.



CABLE BASKET ADAPTOR

- **Ideal for:** Cable basket and multi-tier installations.



Y-FIT

- **Ideal for:** Cable containment, signage, heating and cooling units, heavy duty lighting, radiant panels, chilled beams, balanced pipework, plenum boxes.



	Standard	Central Exit	Side Exit	QT	Calibra	Snap Hook	Y-Fit	Cable Basket Adaptor
UniGrip No. 2	Available	Available	Available	Available	Available	Available	Available	Available
UniGrip No. 3	Available	Available	Available	Available	Available	Available	Available	Available
UniGrip No. 4	Available	Available	Available	Available	Available	Available	Available	Available

Available Unavailable

Supplied as ready-to-use kits with a length of cable, UniGrip Hanger, and end fixing of your choice.

Duct Trapeze Hanger

Ideal for fast suspension of rectangular ducting or similar services.

- Eliminates the need for a strut support
- Suitable for ducting made from 0.6 - 1.5 mm gauge steel
- Spreads the load across three fixing points
- Attaches with self-drilling screws or pop rivets (not provided)
- Optional rubber pad prevents air leakage and dampens vibration
- Release pin allows rapid height adjustment



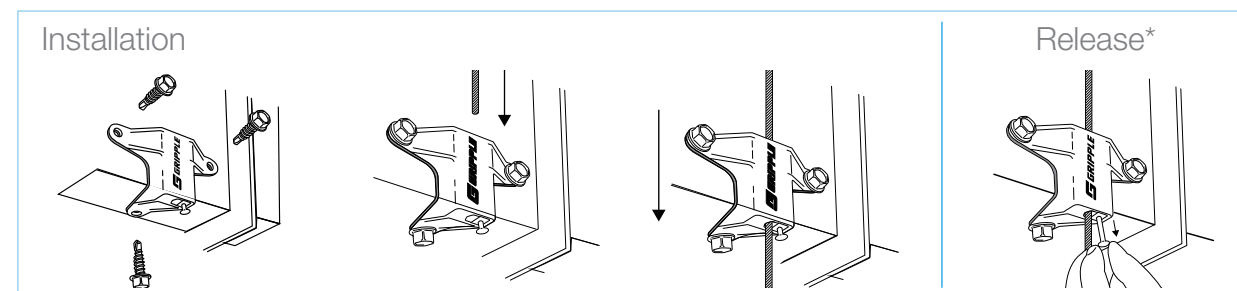
Available in size No.2
Rubber Pad is Sold Separately



Supplied as ready-to-use kits with a length of cable, Duct Trapeze fastener and end fixing of your choice.

5:1 SAFETY FACTOR LOAD RATING	No.2
	100 lbs

END FIXINGS PAGE 51	ACCESSORIES PAGE 65	TECHNICAL PAGE 77	TRAPEZE KIT CODES PAGE 39
------------------------	------------------------	----------------------	------------------------------



*When releasing: 1. Remove load, 2. Pull pin, 3. Raise or lower on cable

Butterfly Trapeze Hanger

Ideal for fast suspension of rectangular ducting or similar services that are hung close to the ceiling.

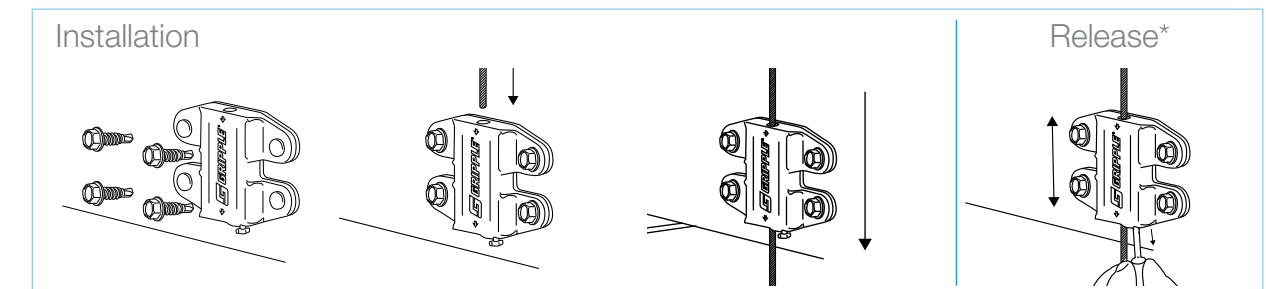
- Simple height adjustment using the integral pin prior to applying load
- Spreads the load across four fixing points
- Rubber pad prevents air leakage and dampens vibration
- Can be used for multi-tiered installations



Supplied as ready-to-use kits with a length of cable, Butterfly Trapeze fastener, and end fixing of your choice.

5:1 SAFETY FACTOR LOAD RATING	No.2
	100 lbs

END FIXINGS PAGE 51	ACCESSORIES PAGE 65	TECHNICAL PAGE 77	TRAPEZE KIT CODES PAGE 39
------------------------	------------------------	----------------------	------------------------------



*When releasing: 1. Remove load, 2. Pull pin, 3. Raise or lower on cable

Fast Trak

Pre-fabricated rigid support solution offering speed, flexibility, and efficient use of space, for the installation of electrical containment, ductwork and other mechanical services.

- **Safe:** A pre-fabricated system which removes the need to cut threaded rod or channel on site
- **Strong:** 400 lbs with a 3:1 safety factor per system
- **Quick:** Up to six times faster to install than traditional suspension systems
- **Adjustable:** Bracket can be moved up and down the track without tools
- **Secure:** Safety lock off ensures security once bracket is in place
- **Compatible:** Two-point ceiling fixing using shot fire, drop in anchor or wedge
- **Zero Waste Excess:** Tracks bend neatly under bracket
- **Space Saver:** System can be 'stacked' on-site within a small area

NEW!!

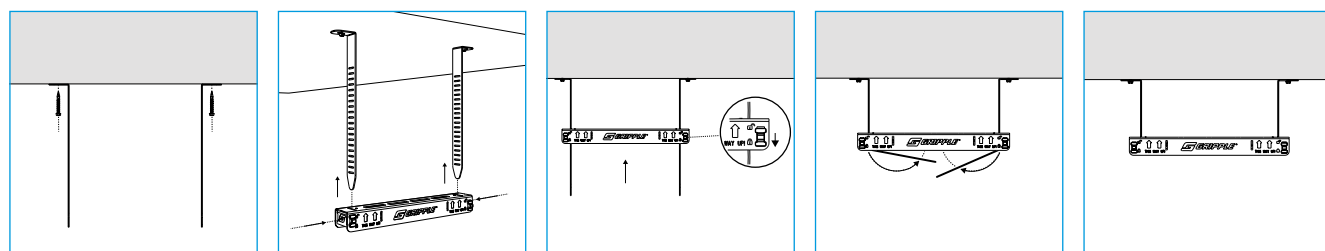


Available in six bracket widths and two drop lengths



3:1 SAFETY FACTOR LOAD RATING	Per Bracket
	400 lbs

Installation



UniGrip & Trapeze Kit Codes

How to work out your unique product code

1 CHOOSE YOUR PRODUCT																	
										* Replace the FN code with CN for Strut Nut, or to SN for Spring Strut Nut. * Replace the FN code with CN for Strut Nut, or to SN for Spring Strut Nut.							
2 CHOOSE YOUR END FIXING																	
3 CHOOSE YOUR CABLE LENGTH																	
5FT	10FT	15FT	20FT	30FT													

* Stud available in 1/4" or 3/8". Barrel available in 1/4" or 3/8". 90 Degree Eyelet available in 1/4" or 3/8". In place of asterisk in code enter Q for 1/4" or 3/8 for 3/8".

Enter your unique product code (e.g. TZ2-LG-10FT):

-

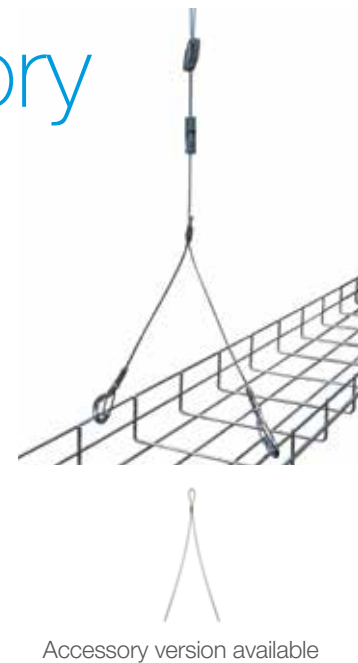
PRODUCT
END FIXING
CABLE LENGTH

For further product information please call **1 866 474 7753** or visit our website www.gripple.com.

Y-Fit & Y-Fit Accessory

Single point suspension at ceiling with two "leg" attachment points

- Ideal for light fixtures and cable baskets
- One leg can be detached to allow for cable installation
- Available with a range of end fixings for legs (Hooks, Toggles, etc.) and a variety of leg lengths
- Y-Accessory version available for use with another Gripple hanger; ideal for longer drops
- Use with standard Gripple Fastener or Express Fastener

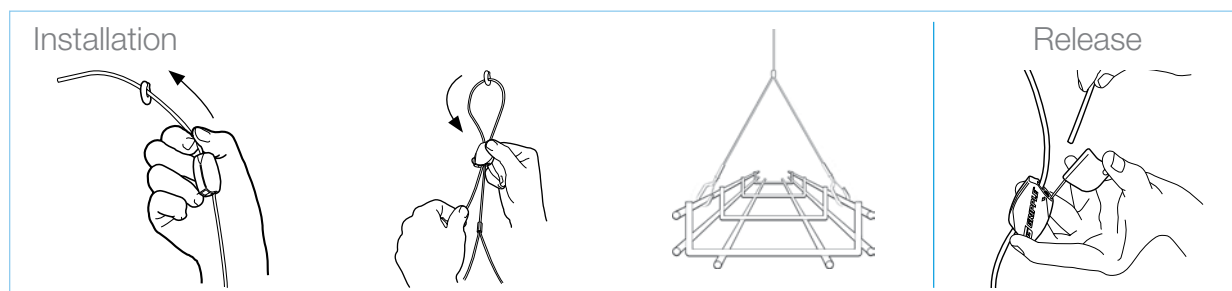


Accessory version available



Supplied as ready-to-use kits with a length of cable, Gripple fastener, and end fixings of your choice.

- END FIXINGS - PAGE 51
- ACCESSORIES - PAGE 65
- TECHNICAL - PAGE 77



Y-Fit Kit Codes

How to work out your unique product code

1 CHOOSE YOUR PRODUCT

Y-Fit No.1 YHF1	Y-Fit No.2 YHF2	Y-Fit No.3 YHF3	Y-Fit Accessory No.1 AY1	Y-Fit Accessory No.2 AY2	Y-Fit Accessory No.3 AY3

2 CHOOSE YOUR LEG END FIXING

Loop LG	Toggle TQG TG	Hook HG

3 CHOOSE YOUR CABLE LENGTH*

5FT	10FT	15FT	20FT	30FT
-----	------	------	------	------

*Not applicable for Y-Fit Accessory

4 CHOOSE YOUR LEG LENGTH*

150MM	300MM	460MM
-------	-------	-------

*150MM = 6", 300MM = 12", 460MM = 18". Custom leg lengths are also available.

Enter your unique product code (e.g. YHF3-HG-10FT-300MM):

<input type="text"/>	<input type="text"/>	<input type="text"/>	<input type="text"/>	-	<input type="text"/>	<input type="text"/>	<input type="text"/>	<input type="text"/>	-	<input type="text"/>	<input type="text"/>	<input type="text"/>	<input type="text"/>	<input type="text"/>	<input type="text"/>
PRODUCT				LEG END FIXING				CABLE LENGTH				LEG LENGTH			

For further product information please call **1 866 474 7753** or visit our website www.gripple.com.

Cable Strut Kit & C-Clip Hanger

Create secure, overhead spans by running high strength cable between two fixed points. Ideal for applications where no direct vertical anchor point is available. The Gripple C-Clip, an innovative twist-on/off device, allows you to suspend from anywhere along the horizontal span.

- Visually discreet and lightweight
- Allows for suspension of services exactly where needed
- No tools needed to install
- Available in 1/8" and 1/4" cable diameters, for suspensions up to 220 lbs per span
- C-Clip End Fixing allows for horizontal and vertical adjustment
- C-Clip Cams lock solidly in place, even at angles up to 60°



Available in 1/8" and 1/4" systems

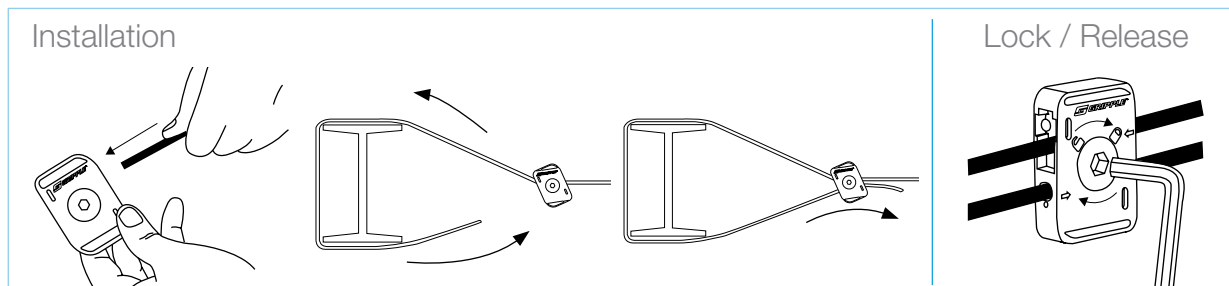


Cable Strut supplied as ready-to-use kits, including galvanized cable cut to length, two fasteners, and a Release Key. (C-Clip Hangers sold separately)

5:1 SAFETY FACTOR LOAD RATING CABLE SPAN	1/8"	1/4"
	66 lbs	220 lbs

ACCESSORIES - PAGE 65

TECHNICAL - PAGE 77



Cable Strut Kit Codes

How to work out your unique product code

1 CHOOSE YOUR PRODUCT



1/8" Cable Strut
CTI-1/8



1/4" Cable Strut
CTI-1/4

2 CHOOSE YOUR CABLE LENGTH

- 10FT
- 15FT
- 20FT
- 25FT
- 50FT
- 75FT
- 100FT

Enter your unique product code (e.g. CTI-1/8-75FT):

-

PRODUCT CABLE LENGTH

C-Clip End Fixing can be ordered to suspend any Gripple hanger from the Cable Strut Kit (see product code pages).

Cable Strut Wall Brackets are available as a wall attachment point for the Cable Strut Kit using the code below.



C-Clip 1/8"
End Fixing Code
CC-1/8

C-Clip 1/4"
End Fixing Code
CC-1/4



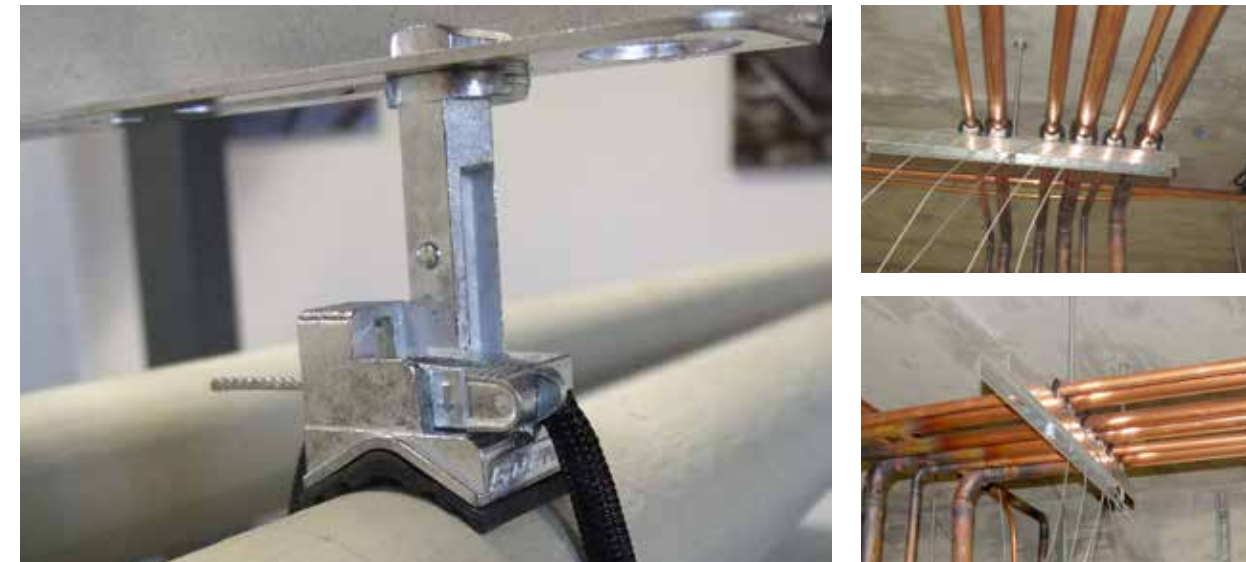
CAT-BRACKET-4IN

For further product information please call 1 866 474 7753 or visit our website www.gripple.com.

Quick Twist Clamp

The Quick Twist Clamps are used in conjunction with Gripple Pipe Support Brackets for quick and easy support of all types of piping.

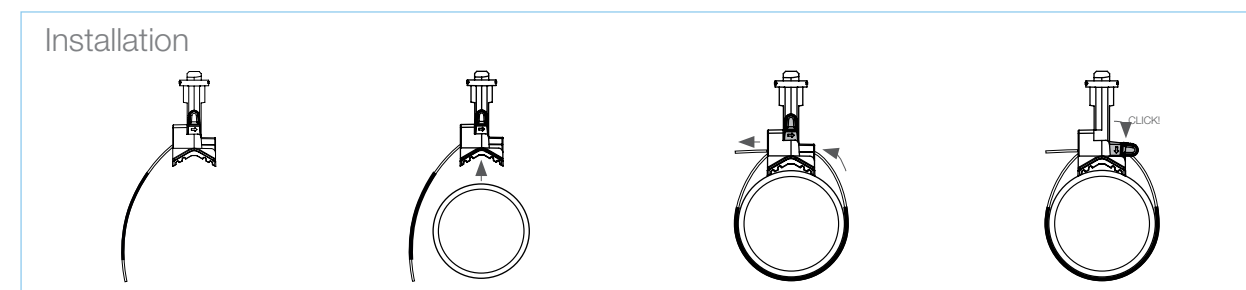
- Replaces 12 different pipe hanger sizes
- Suitable for all pipe sizes from \varnothing 1/2" to \varnothing 6" OD
- Improved insulation against vibration
- Quarter turn fixing to attach to Pipe Bracket - tool free attachment and adjustment
- Retractable, removable sleeve pre-fitted to cable to prevent galvanic corrosion
- Can be used over Calsil or Armafix insulation (also available)
- Spreader Band accessory available to distribute the weight of the suspended piping more evenly along the cable



Supplied in ready-to-use kits with Pipe Support Bracket sizes 1, 2, 3, or 4 ft.

3:1 SAFETY FACTOR LOAD RATING (below mount)	QT TWIST CLAMP
1:6:1 SAFETY FACTOR LOAD RATING (above mount)	170 lbs (below mount) / 1,000 lbs (above mount)

ACCESSORIES PAGE 65	TECHNICAL PAGE 77	PIPING KIT CODES PAGE 49
------------------------	----------------------	-----------------------------



Pipe Support Bracket

Pipe Support Brackets are supplied with Quick Twist Clamps for quick and easy support of piping.



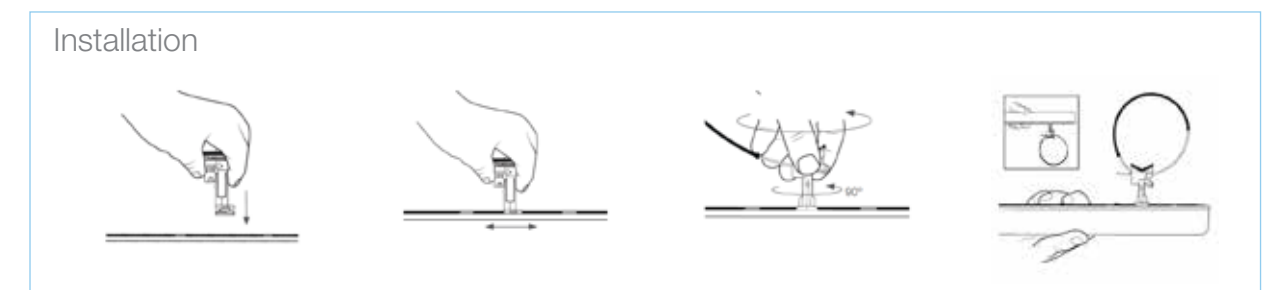
- Quick and easy installation - Pipe Brackets are supplied with QT Clamps featuring quarter turn fixing
- Versatile - Can be bolted directly to soffit or wall, or suspended using threaded rod or Gripple UniGrip hangers
- Saves labor time - Eliminates the need for cutting channel on site, allowing more productive use of labor
- Improves health and safety - No tools required for installation
- Max load depends on bracket length and above or below mount configuration

Available in sizes
PB1FT, PB2FT, PB3FT, and PB4FT



Supplied as ready-to-use kits with up to (8) QT Clamps depending on Bracket length.

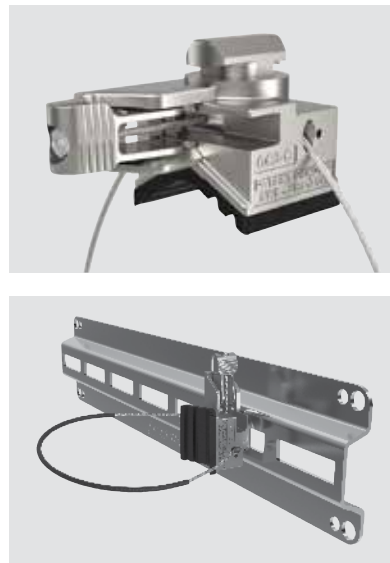
ACCESSORIES PAGE 65	TECHNICAL PAGE 77	PIPING KIT CODES PAGE 49
------------------------	----------------------	-----------------------------



QT Compact Clamp

The Quick Twist Compact Clamps are used in conjunction with Low Profile Brackets for lower profile support of all types of piping.

- A lower profile than the QT Twist Clamp
- Up to 6 times faster than traditional methods
- Suitable for all pipe sizes from \varnothing 1/2" to \varnothing 6" OD
- Replaces 12 different pipe hanger sizes
- Quarter turn fixing to attach to pipe bracket - tool free attachment and adjustment
- Can be used over Calsil or Armafix insulation (also available)
- Improved insulation against vibration
- Spreader Band Accessory available to distribute the weight of the suspended piping more evenly along the cable



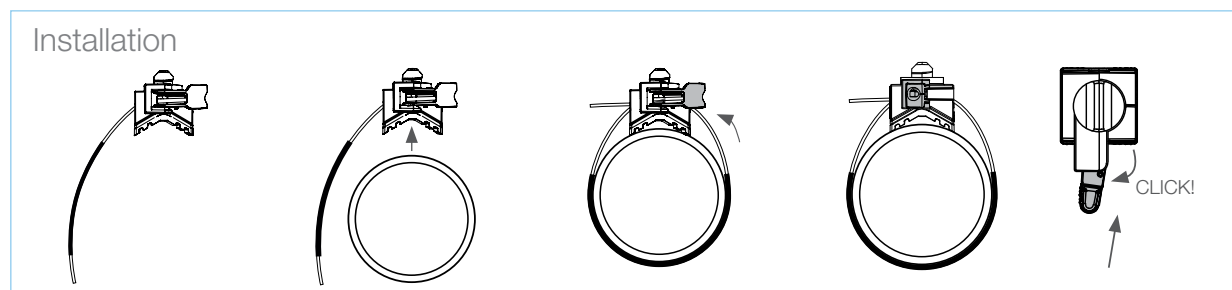
Supplied in ready-to-use kits with Low Profile Pipe Bracket sizes 1, 2, 3 or 4 ft.

3:1 SAFETY FACTOR LOAD RATING (Below Mount)	QT COMPACT CLAMP 170 lbs (Below Mount)
---	---

ACCESSORIES
PAGE 65

TECHNICAL
PAGE 77

PIPING KIT CODES
PAGE 49



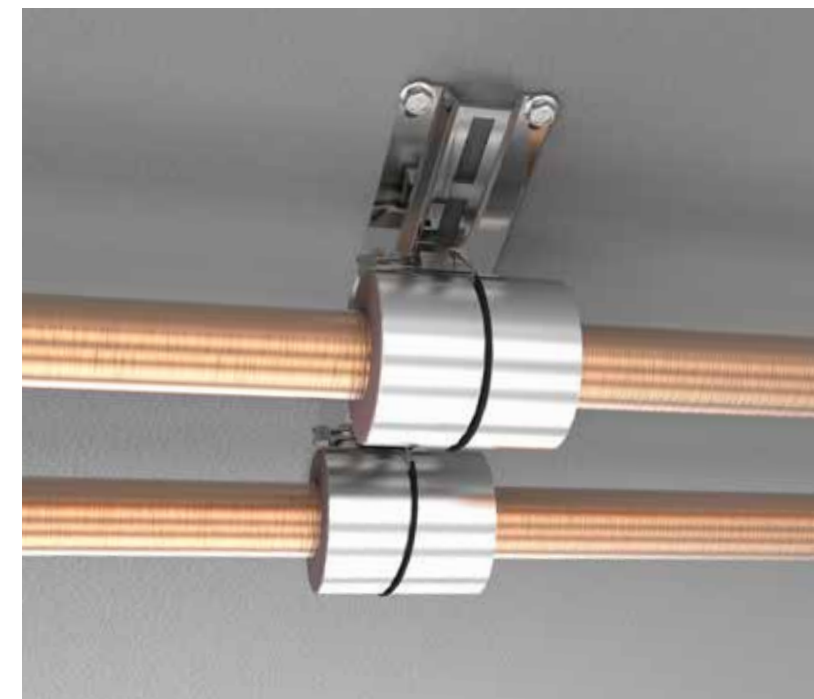
Low Profile Pipe Bracket

Low Profile Pipe Brackets are supplied with Quick Twist Compact Clamps for lower profile support of piping.

- A lower profile version than the standard pipe bracket
- Quick and easy installation - Brackets are supplied with QT Compact Clamps featuring quarter turn fixing
- Versatile - Can be bolted directly to soffit or wall
- Saves labor time - Eliminates the need for cutting channel on site, allowing more productive use of labor
- Improves health and safety - No tools required for installation
- Max load depends on bracket length



Available in sizes
LPB1FT, LPB2FT, LPB3FT and LPB4FT

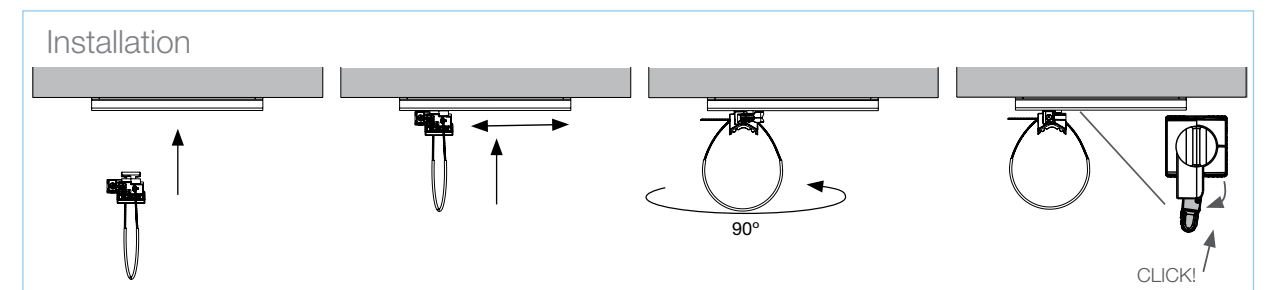


Supplied in ready-to-use kits with up to (8) QT Compact Clamps.

ACCESSORIES
PAGE 65

TECHNICAL
PAGE 77

PIPING KIT CODES
PAGE 49



Threaded Clamp

The 3/8" Threaded Clamp is engineered for hanging all types of piping within mechanical and plumbing services.

- Can be suspended from threaded rod or strut
- Suitable for all pipe sizes from \varnothing 1/2" to \varnothing 6" OD
- Replaces 12 different pipe hanger sizes
- Retractable, removable sleeve is pre-fitted to cable to prevent galvanic corrosion
- Improved insulation against vibration
- Also available as a pre-assembled strut attachment kit; includes a 2-inch length of threaded rod, a hex nut, and square washer
- Can be used over Calsil or Armafix insulation (also available)
- Spreader Band accessory available to distribute the weight of the suspended piping more evenly along the cable



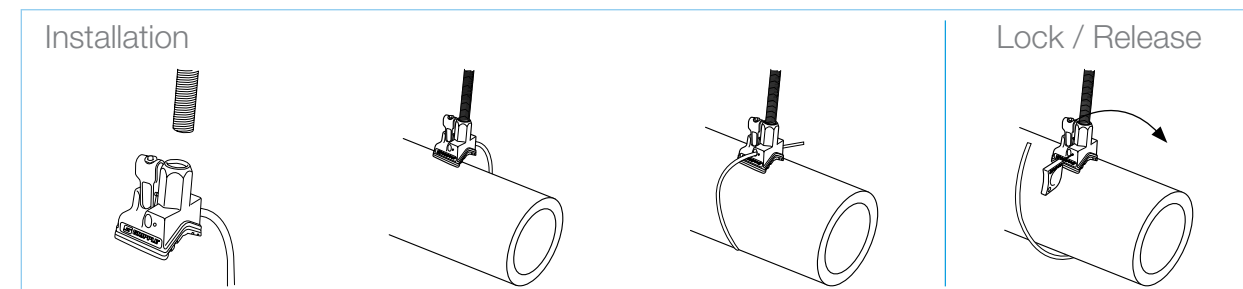
Supplied individually or as part of a custom bracket system to suit your application.

3:1 SAFETY FACTOR LOAD RATING	THREADED CLAMP
	510 lbs

ACCESSORIES
PAGE 65

TECHNICAL
PAGE 77

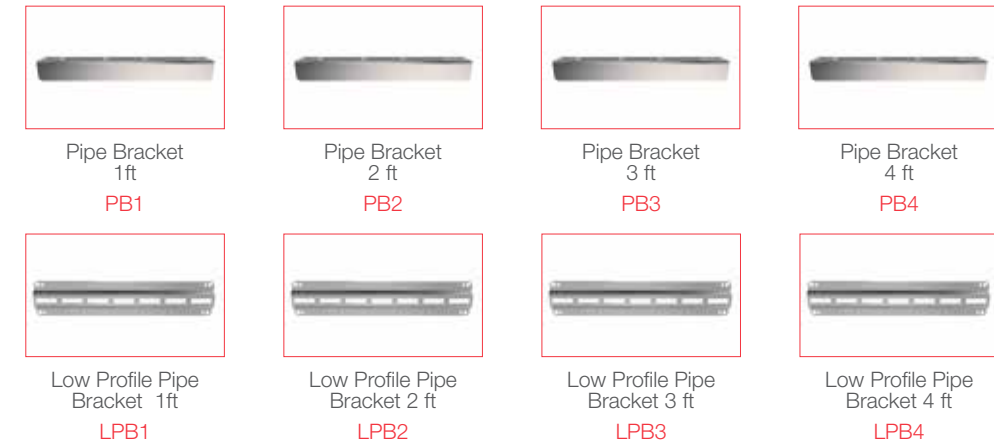
PIPING KIT CODES
PAGE 49



Pipe Support Kit Codes

How to work out your unique product code

1 CHOOSE YOUR PIPE BRACKET



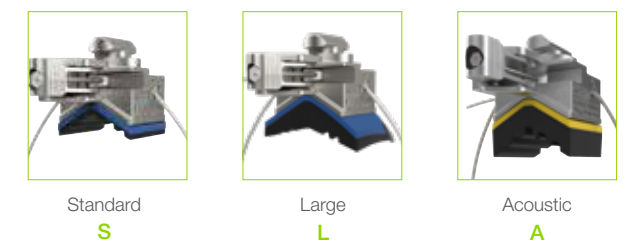
2 CHOOSE YOUR CLAMP QUANTITY



3 CHOOSE YOUR TYPE OF CLAMP



4 CHOOSE YOUR PAD OPTION



Enter your unique product code (e.g. LPB3-3GC2-C-24IN-S):

PIPE BRACKET
CLAMP QUANTITY
TYPE OF CLAMP
CABLE LENGTH (IN)
PAD OPTION

For further product information please call 1 866 474 7753 or visit our website www.gripple.com.



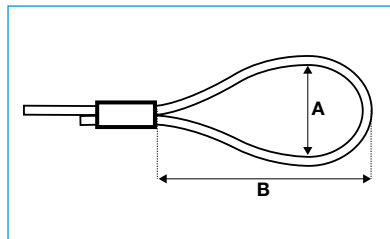
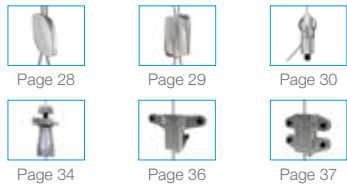
End Fixings

Loop & Stud	page 52
Toggle & Hook	page 53
Mini Hook & End Stop	page 54
Barrel & Top Hat Barrel	page 55
Eyelet & 45° Eyelet	page 56
90° Eyelet & Cladding Hook	page 57
Ring Anchor & Ceiling Anchor	page 58
Karabiner & C-Clip	page 59
Shot Fire & Eyselag	page 60
Twist Clip (White) & Swivel Toggle	page 61
Metal Deck Insert	page 62
Spider Insert	page 63

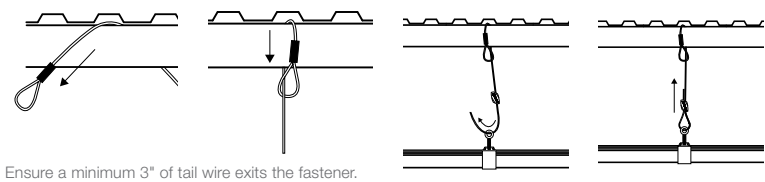
Loop

- End Fixing that installs by a non-invasive, simple, choke knot technique
- Can be choked around a beam, bar joist, strut, or roof trusses
- Available for use with No. 1-5 Gripple fasteners. Refer to fastener load ratings and safety factors.
- Supplied as a ready-to-use kit with Gripple fastener and length of cable
- Available in lengths of 5 ft - 30 ft as standard
- Also available in Stainless Steel

For use with these Hangers



Installation



Ensure a minimum 3" of tail wire exits the fastener.

Install fixings in accordance with manufacturer's specifications.

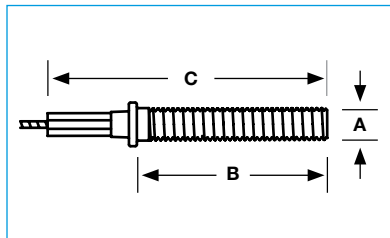
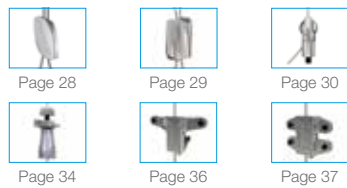


Size	A (in) Approx.	B (in) Approx.
No. 1	1 3/16"	2 3/8"
No. 2	1 3/16"	2 3/8"
No. 3	1 3/16"	2 3/8"
No. 4	1 3/4"	3 1/4"
No. 5	1 3/4"	3 1/2"

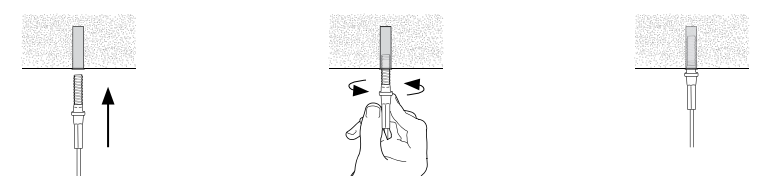
Stud

- End fixing that installs into an anchor or internally threaded concrete insert
- Available in 1/4" and 3/8", for use with No. 1-4 Gripple fasteners. Refer to fastener load ratings and safety factors.
- Supplied as a ready-to-use kit with Gripple fastener and length of cable
- Available in lengths of 5 ft - 30 ft as standard
- Also available in Stainless Steel

For use with these Hangers



Installation



Install fixings in accordance with manufacturer's specifications.

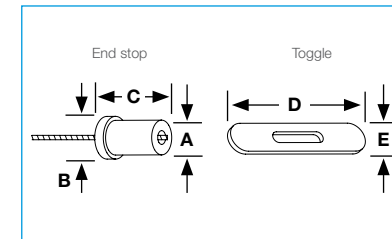
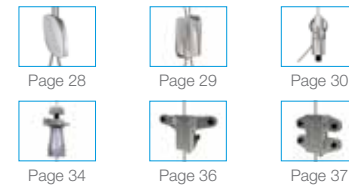


Size	A (in)	B (in)	C (in)
No. 1	1/4"	1"	2"
No. 2	1/4"	1"	2"
	1/4"	2"	4"
	3/8"	1 7/8"	2 3/4"
No. 3	1/4"	1"	2"
	1/4"	2"	4"
	3/8"	1 3/4"	3 3/4"
No. 4	3/8"	1 3/4"	3 3/4"

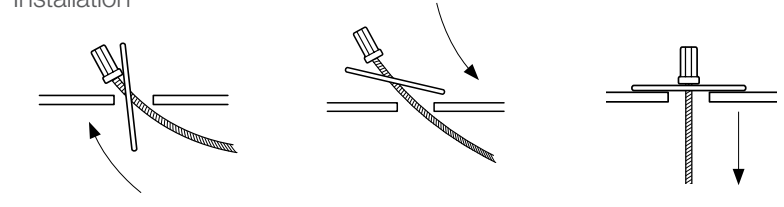
Toggle

- Inserts into specific hole diameters of light fixtures, metal decking, and other pre-drilled structures or services
- Available to fit 1/4", 5/16", and 13/32" hole sizes, for use with No. 1-3 Gripple fasteners. Refer to fastener load ratings and safety factors.
- Supplied as a ready-to-use kit with Gripple fastener and length of cable
- Available in lengths of 5 ft - 30 ft as standard
- Also available in Stainless Steel

For use with these Hangers



Installation



Install fixings in accordance with manufacturer's specifications.

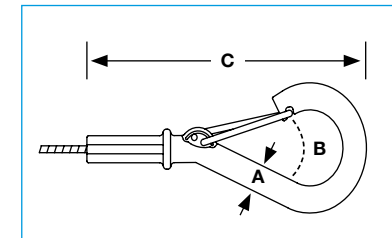
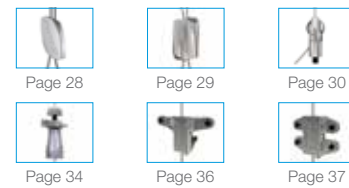


Size	A Ø (in)	B Ø (in)	C (in)	D (in)	E (in)
No. 1	5/32"	1/4"	5/16"	1 9/16"	7/32"
No. 2	1/4"	5/16"	15/32"	1 9/16"	5/16"
	1/4"	1/4"	15/32"	1 9/16"	1/4"
No. 3	1/4"	3/8"	3/4"	2"	3/8"

Hook

- Quick and easy attachment to cable basket, tray, beam & purlin clips, and light fixtures
- Available for use with No. 1-3 Gripple fasteners. Refer to fastener load ratings and safety factors.
- Supplied as a ready-to-use kit with Gripple fastener and length of cable
- Available in lengths of 5 ft - 30 ft as standard
- Also available as stainless steel

For use with these Hangers



Installation



Install fixings in accordance with manufacturer's specifications.



Size	A (in)	B (in)	C (in)
No. 1	1/4"	5/8"	3"
No. 2	1/4"	5/8"	3"
No. 3	1/4"	5/8"	3"

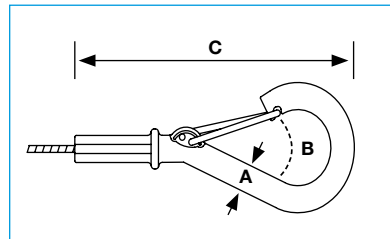
Mini Hook

- Smaller version of the Hook, ideal for cable basket & light fixtures
- Available for use with No. 1 Gripple fasteners. Refer to fastener load ratings and safety factors.
- Supplied as a ready-to-use kit with Gripple fastener and length of cable
- Available in lengths of 5 ft - 30 ft as standard

For use with these Hangers

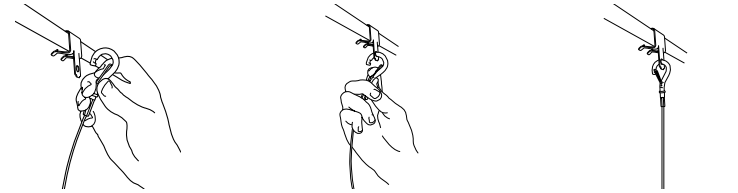


Page 28 Page 29 Page 30



Size	A (in)	B (in)	C (in)
No. 1	3/16"	1/4"	2 3/16"

Installation



Install fixings in accordance with manufacturer's specifications.

End Stop

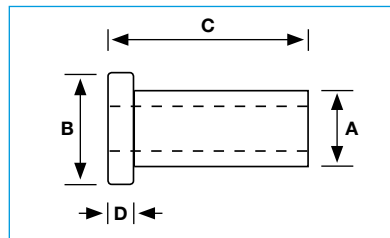
- Simple, slide-in installation for suspending from lighting channels, track, and other channel fixtures
- Available for use with No. 1-3 Gripple fasteners. Refer to fastener load ratings and safety factors.
- Supplied as a ready-to-use kit with Gripple fastener and length of cable
- Available in lengths of 5 ft - 30 ft as standard

For use with these Hangers



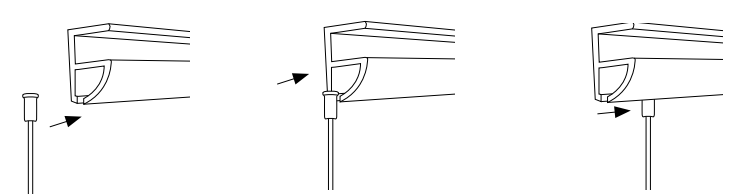
Page 28 Page 29 Page 30

Page 34 Page 36 Page 37



Size	A (in)	B (in)	C (in)	D (in)
No. 1	5/32"	1/4"	5/16"	1/16"
No. 2	1/4"	5/16"	15/32"	1/16"
No. 3	1/4"	3/8"	3/4"	1/8"

Installation



Install fixings in accordance with manufacturer's specifications.

Barrel

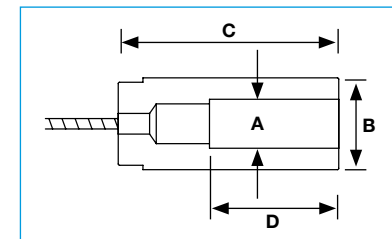
- Attaches to any 1/4" or 3/8" male thread product
- Ideal for use on signage or exposed services, such as in retail and office environments
- Available for use with No. 1-3 Gripple fasteners. Refer to fastener load ratings and safety factors.
- Supplied as a ready-to-use kit with Gripple fastener and length of cable
- Available in lengths of 5 ft - 30 ft as standard

For use with these Hangers



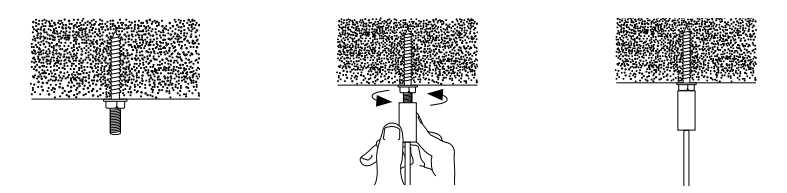
Page 28 Page 29 Page 30

Page 34 Page 36 Page 37



Size	A (in)	B (in)	C (in)	D (in)
No. 1	1/4"	7/16"	1 3/4"	1"
No. 2	1/4"	7/16"	1 3/4"	1"
	3/8"	1/2"	1 3/4"	1"
No. 3	3/8"	1/2"	1 3/4"	1"

Installation



Install fixings in accordance with manufacturer's specifications.

Top Hat Barrel

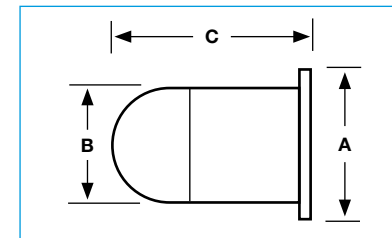
- Aesthetic 1/4" threaded end fixing ideal for use when lighting or other services are exposed/visible
- Available for use with No. 1-2 Gripple fastener. Refer to fastener load ratings and safety factors.
- Two-part construction for fast installation using 1/4" sunk screws
- Supplied as a ready-to-use kit with Gripple fastener and length of cable
- Available in lengths of 5 ft - 30 ft as standard

For use with these Hangers



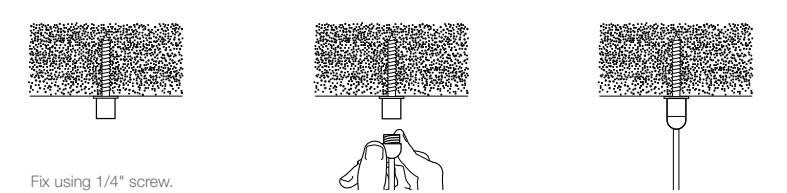
Page 28 Page 29 Page 30

Page 34 Page 36 Page 37



Size	A (in)	B (in)	C (in)
No. 1	11/16"	9/16"	1"
No. 2	11/16"	9/16"	1"

Installation



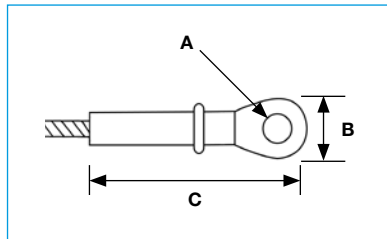
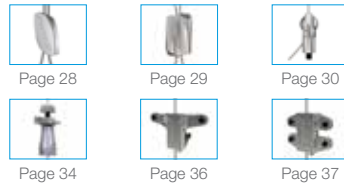
Fix using 1/4" screw.

Install fixings in accordance with manufacturer's specifications.

Eyelet

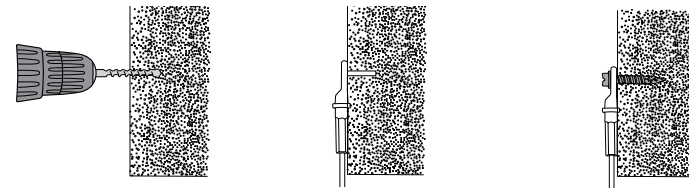
- For fixing sideways into wood beams, speakers or visual display, light fixtures, or other applications that require bolting to brackets or fixtures
- Available for use with No. 1-3 Gripple fastener. Refer to fastener load ratings and safety factors.
- Supplied as a ready-to-use kit with Gripple fastener and length of cable
- Available in lengths of 5 ft - 30 ft as standard

For use with these Hangers



Size	A (in) Anchor size Ø	B (in)	C (in)
No. 1	1/4"	3/8"	1 3/4"
No. 2	1/4"	3/8"	1 3/4"
No. 3	1/4"	3/8"	1 3/4"

Installation

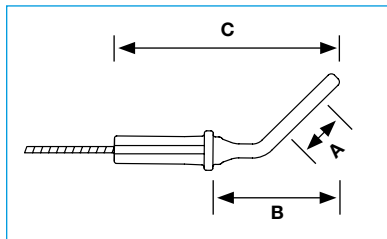
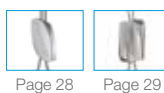


Install fixings in accordance with manufacturer's specifications.

45° Eyelet

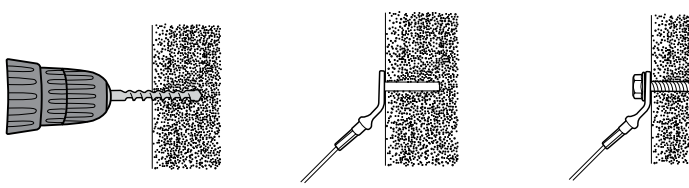
- Ideal for use in bracing applications
- Available for use with No. 2-3 Gripple fasteners. Refer to fastener load ratings and safety factors.
- Supplied as a ready-to-use kit with Gripple fastener and length of cable
- Available in lengths of 5 ft - 30 ft as standard

For use with these Hangers



Size	A (in) Anchor size Ø	B (in)	C (in)
No. 2	3/8"	1 1/8"	2 1/16"
No. 3	3/8"	1 1/8"	2 1/16"

Installation

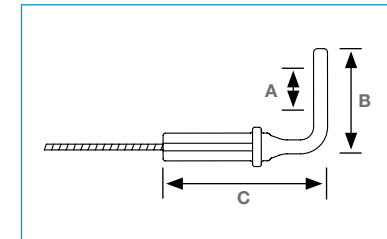
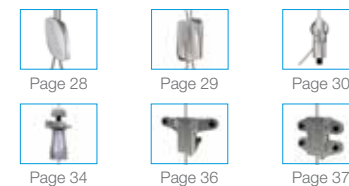


Install fixings in accordance with manufacturer's specifications.

90° Eyelet

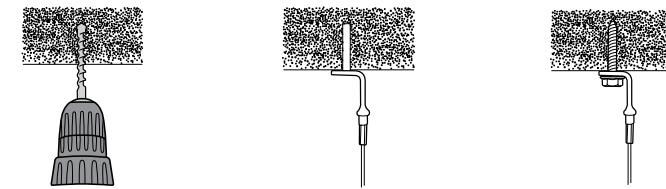
- Can be shot fired into concrete or steel
- Ideal for use with Gripple concrete screws for direct soffit mounting
- Available for use with No. 1-3 Gripple fasteners. Refer to fastener load ratings and safety factors.
- Supplied as a ready-to-use kit with Gripple fastener and length of cable
- Available in lengths of 5ft - 30ft as standard

For use with these Hangers



Size	A (in) Anchor size Ø	B (in)	C (in)
No. 1	1/4"	1"	1 1/2"
No. 2	1/4"	1"	1 1/2"
No. 3	1/4"	1"	1 1/2"
	3/8"	1 3/4"	1 5/16"

Installation

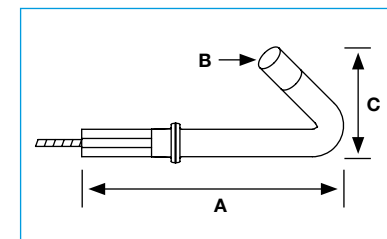
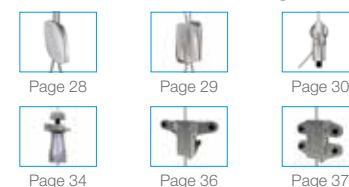


Install fixings in accordance with manufacturer's specifications.

Cladding Hook

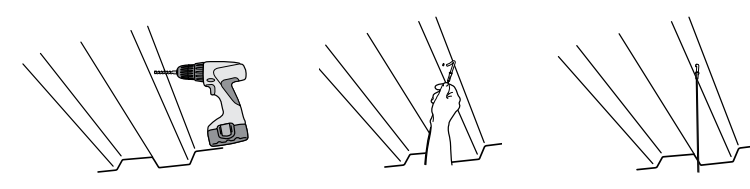
- Designed to fit 1/4" holes in metal decking roof structures
- Suitable for every grade of steel
- Available for use with No. 1-2 Gripple fasteners. Refer to fastener load ratings and safety factors.
- Supplied as a ready-to-use kit with Gripple fastener and length of cable
- Safe working load may vary dependent on the thickness of steel to which it is attached
- Available in lengths of 5 ft - 30 ft as standard

For use with these Hangers



Size	A (in) Anchor size Ø	B (in) Anchor size Ø	C (in)
No. 1	2 3/8"	1/4"	15/16"
No. 2	2 3/8"	1/4"	15/16"

Installation

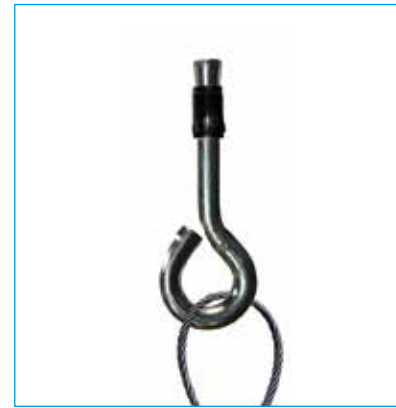
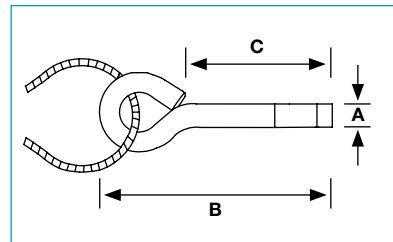


Install fixings in accordance with manufacturer's specifications.

Ring Anchor

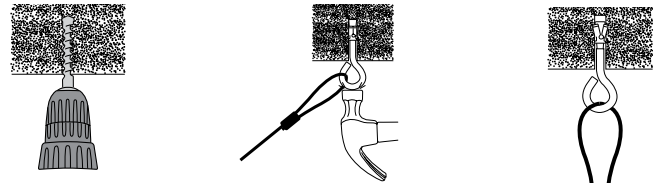
- Ideal for fixing into concrete and cracked concrete
- Shallow anchorage depth of 1"
- Available for use with No. 1-2 Gripple fasteners. Refer to fastener load ratings; 3:1 safety factor
- Supplied as a ready-to-use kit with Gripple fasteners and length of cable; ideal for use with Loop end fixing
- Available in lengths of 5 ft - 30 ft as standard

For use with these Hangers



Size	A (in)	B (in)	C (in)
No. 1	1/4"	2 1/8"	1 3/8"
No. 2	1/4"	2 1/8"	1 3/8"

Installation

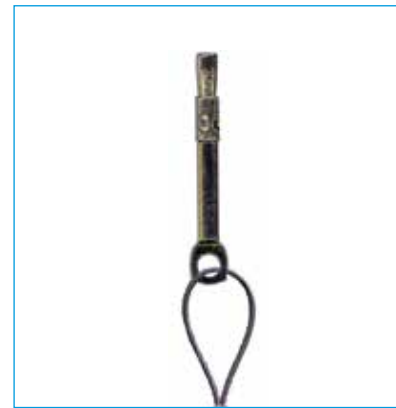
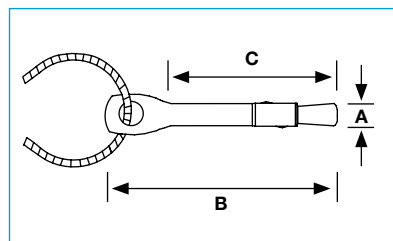


Install fixings in accordance with manufacturer's specifications.

Ceiling Anchor

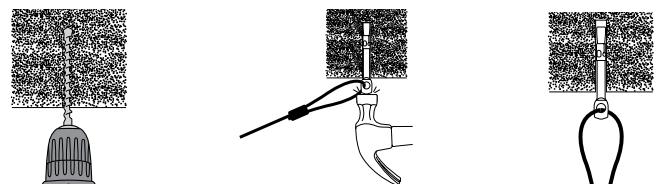
- Ideal for fixing Gripple hangers into concrete
- Knock into a pre-drilled hole, pull with a claw hammer to set
- Available for use with No. 1-2 Gripple fasteners. Refer to fastener load ratings; 3:1 safety factor.
- Supplied as a ready-to-use kit with Gripple fastener and length of cable
- Available in lengths of 5 ft - 30 ft as standard

For use with these Hangers



Size	A (in)	B (in)	C (in)
No. 1	1/4"	2 9/16"	2"
No. 2	1/4"	2 9/16"	2"

Installation

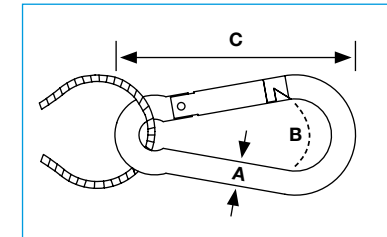
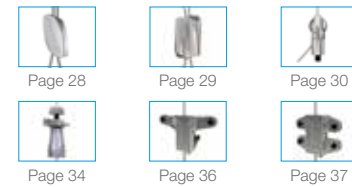


Install fixings in accordance with manufacturer's specifications.

Karabiner

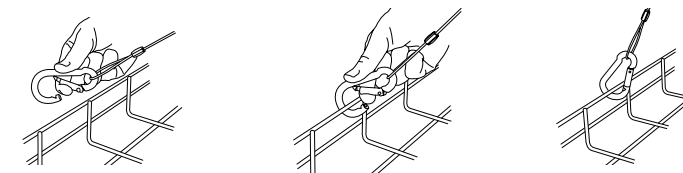
- Provides 3/8" clearance
- Available for use with No. 1-3 Gripple fasteners. Refer to fastener load ratings and safety factors.
- Supplied as a ready-to-use kit with Gripple fastener and length of cable; ideal for use with Loop end fixing
- Available in lengths of 5 ft - 30 ft as standard

For use with these Hangers



Size	A (in)	B (in)	C (in)
No. 1	1/4"	3/8"	2 3/8"
No. 2	1/4"	3/8"	2 3/8"
No. 3	5/16"	3/8"	3 1/8"

Installation

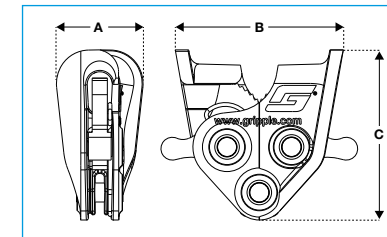
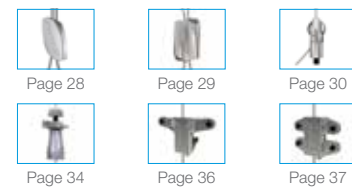


Install fixings in accordance with manufacturer's specifications.

C-Clip

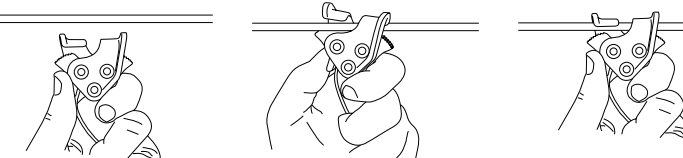
- Designed to suspend a No. 2 Gripple hanger from Gripple Cable Strut
- One handed installation, no tools required
- Allows horizontal and vertical adjustment
- Cams lock solidly in place even at angles up to 60°
- 1/8" and 1/4" versions available for attachment to 1/8" and 1/4" Cable Strut
- Available for use with No. 2 Gripple fasteners
- Supplied as a ready-to-use kit with length of cable and Gripple fastener

For use with these Hangers



Size	A (in)	B (in)	C (in)
1/8" C-Clip (35 lb SWL)	1/2"	1"	1 5/16"
1/4" C-Clip (100 lb SWL)	15/16"	1 3/4"	1 3/4"

Installation



Install fixings in accordance with manufacturer's specifications.

Shot Fire

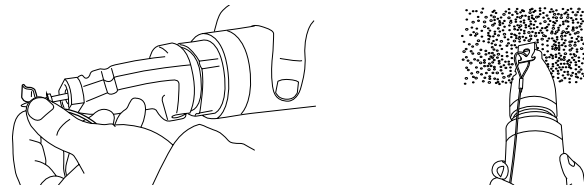
- Shot fire into concrete, or concrete over metal deck
- Can be installed with gas and powder-actuated tools
- Quick and easy fastening solution
- Supplied as a ready-to-use kit with Gripple fastener and length of No. 1 or No. 2 cable
- Please reference submittal data for safe working loads
- Available in lengths of 5 ft - 30 ft as standard



For use with these Hangers



Installation



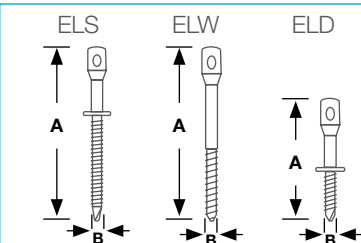
Install fixings in accordance with manufacturer's specifications.

Nail Clip	Shank length (in)	Head diameter (in)
SF35	1 1/4"	5/16"
C945	7/8"	5/16"
NS90	1"	19/64"

Eyelag

- For suspending ceilings and other acoustic applications
- Attaches to wood and sheet steel
- All screws are made with carbon steel and are zinc plated
- Available for use with No.1 and No. 2 hanger kits
- Please reference submittal data for safe working loads.

For use with these Hangers



ELS	
A (in)	B (in)
3"	1/4"

ELW	
A (in)	B (in)
3"	1/4"

ELD	
A (in)	B (in)
2"	1/4"

Installation



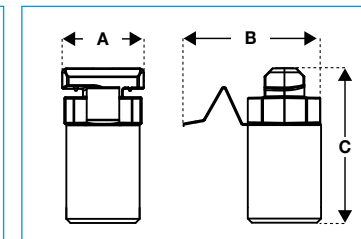
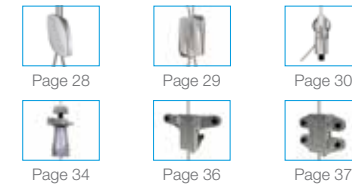
Install fixings in accordance with manufacturer's specifications.

QT Barrel

- For fast quarter-turn attachment to Gripple Low Profile or Pipe Support Brackets
- Allows for suspension of services from pre-installed header rails or Gripple Pipe Support Brackets.
- Fail-safe clip secures into bracket
- Available for use with No. 1-3 Gripple fasteners. Refer to fastener load ratings and safety factors.

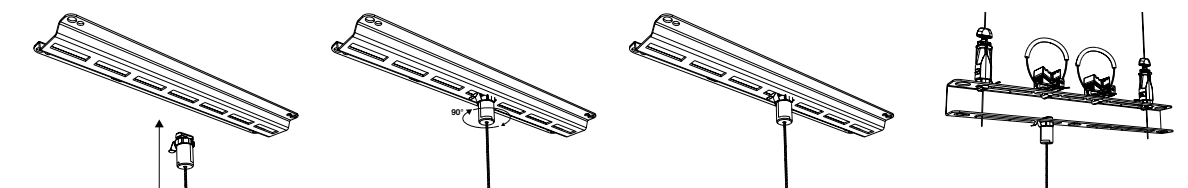


For use with these Hangers



Size	A (in)	B (in)	C (in)
No. 1	13/16	1 11/32	1 15/32
No. 2	13/16	1 11/32	1 15/32
No. 3	13/16	1 11/32	1 15/32

Installation



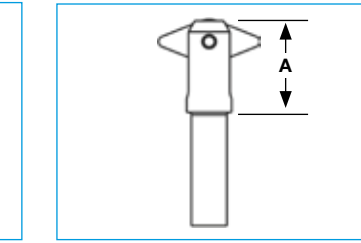
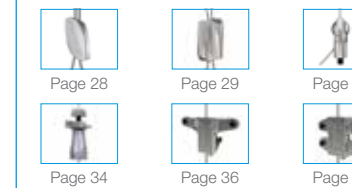
Install fixings in accordance with manufacturer's specifications.

Swivel Toggle

- Only for use with non-threaded Gripple Spider and Metal Deck Inserts
- Inserts into Spider or MDI from below
- Available for use with No. 2-3 Gripple fasteners. Refer to fastener load ratings and safety factors.

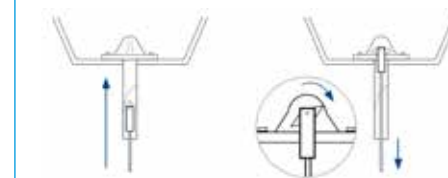


For use with these Hangers

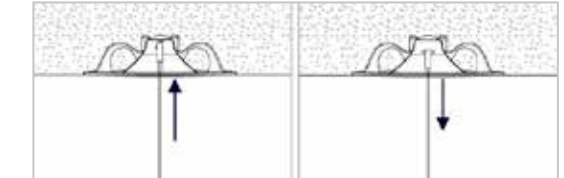


Dimension	Size (in)
A	1 1/2"

Installation for MDI



Installation for Spider



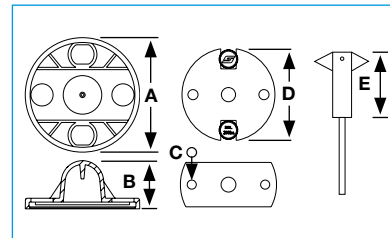
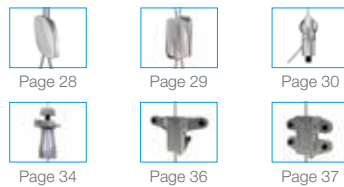
Install fixings in accordance with manufacturer's specifications.

Metal Deck Insert

- Specifically designed to pre-install into metal deck prior to the concrete being poured
- Rubber head prevents the entry hole from being blocked with concrete
- Tube allows for easy insertion of Swivel Toggle end fixing
- Accommodates either No.2 or No.3 size Gripple Hanger
- Supplied as a ready-to-use kit which includes the Metal Deck Insert, length of cable with Swivel Toggle End Fixing, and Gripple fastener
- Threaded version is also available, for use with a 3/8" threaded rod

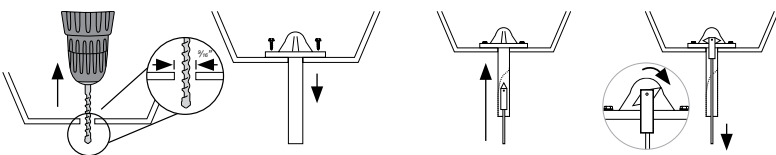


For use with these Hangers

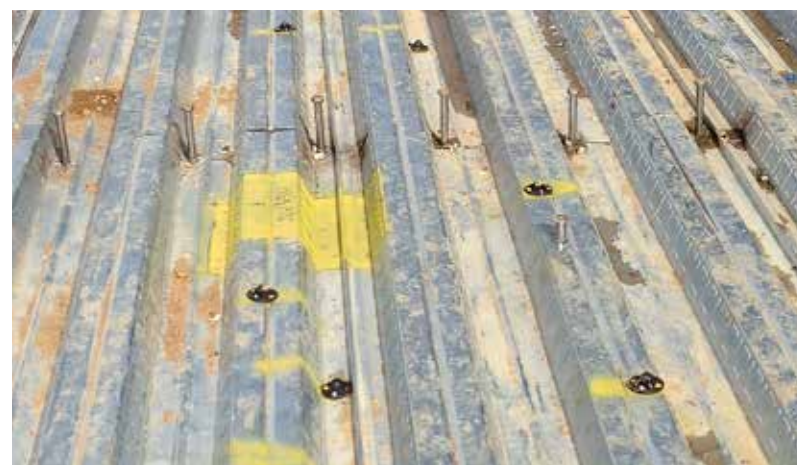


Insert Version	A (in)	B (in)	C Ø	D (in)	E (in)
Swivel Toggle Version	2 3/8"	1"	7/32"	2 3/16"	1 1/2"
Threaded Version	2 3/4"	1"	7/32"	2 3/4"	N/A

Installation



Install fixings in accordance with manufacturer's specifications.

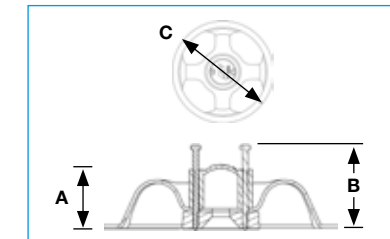
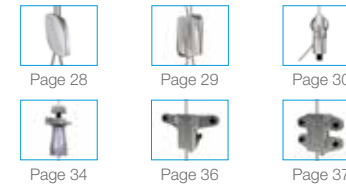


Spider Insert

- Specifically designed as a cast-in-place concrete anchoring solution
- Robust construction withstands on-site conditions before, during, and after the concrete pour
- Various color options available, allowing contractors to easily identify their own inserts from below
- Supplied as a ready-to-use kit which includes a Spider Insert, length of cable with Swivel Toggle end fixing, and Gripple fastener
- Threaded version also available, for use with 3/8" Gripple stud hanger or threaded rod

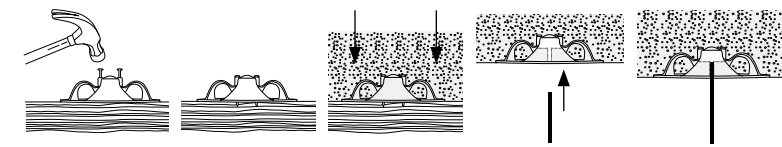


For use with these Hangers



A (in)	B (in)	C (in)
1 1/8"	1 5/8"	4 1/2"

Installation



Install fixings in accordance with manufacturer's specifications.





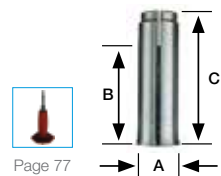
Accessories

Anchoring Solutions	page 66
Beams & Purlins	page 68
Brackets & Attachments	page 69
Adapters	page 72
Tools & Finishing Accessories	page 74

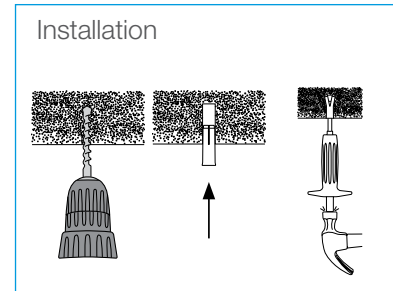
Anchoring Solutions

Drop-In Anchor

- Suitable for non-cracked concrete, precast hollow concrete and hard natural stone
- Internal threaded anchor with flared end for easy setting



Page 77



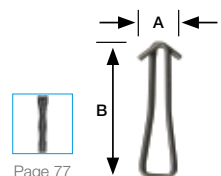
3:1 Safety rating - load rating is dependant on base material

Product code	A	B (in)	C (in)	Max. SWL (lbs)	Hole Ø (in)	Min. Hole depth* (in)	Anchorage depth* (in)
DPA-1/4	1/4"	1/2"	1"	200	3/8"	1 1/4"	1"
DPA-3/8	3/8"	1/2"	1 5/8"	495	1/2"	3/4"	1 5/8"

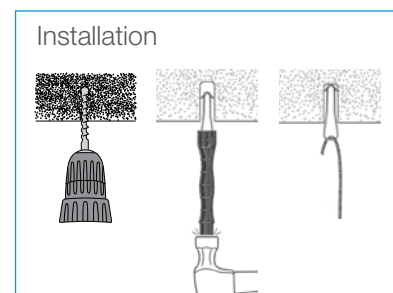
* For further information contact Gripple Technical Services

Concrete Wire Anchor

- Suitable for non-cracked concrete, precast hollow concrete, and hard natural stone
- Stainless steel (304/A2)
- 100 lb SWL applicable to C20/25 concrete



Page 77



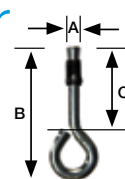
3:1 Safety rating - load rating is dependent on base material

Product code	A (in)	B (in)	Max. SWL (lbs)	Hole Ø (in)	Min. Hole depth* (in)	Min. Anchorage depth* (in)
WIRE-ANCHOR	1/2"	2"	100	5/16"	1 1/4"	1 1/4"

* For further information contact Gripple Technical Services

Cracked Concrete Ring Anchor

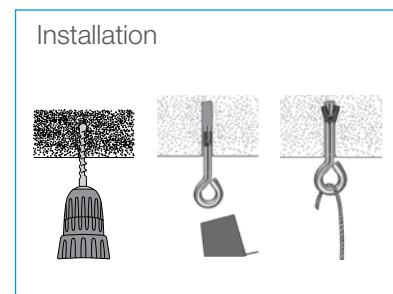
- Suitable for cracked and non cracked concrete
- Self-expanding anchor
- Fire rated



3:1 Safety rating - load rating is dependent on base material

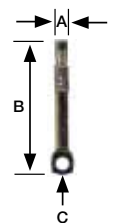
Product code	A (in)	B (in)	C (in)	Max. SWL (lbs)	Hole Ø (in)	Min. Hole depth* (in)	Min. Anchorage depth* (in)
CCRA6	1/4"	2 1/8"	1 3/8"	117	1/4"	1 3/8"	1"

* For further information contact Gripple Technical Services



Concrete Ceiling Anchor

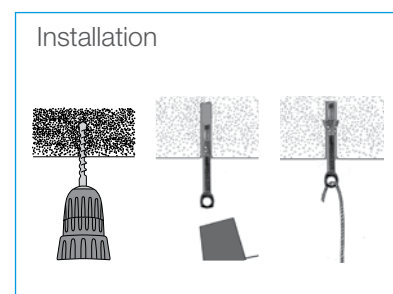
- Self-expanding eyelet hanger suitable for non-cracked concrete, precast hollow concrete, and hard natural stone
- Knock into a pre-drilled hole and pull with a claw hammer to set
- Ideal for use with the Standard Hanger (page 28)



3:1 Safety rating - load rating is dependant on base material

Product code	A (in)	B (in)	C Ø (in)	Max. SWL (lbs)	Min. Hole depth* (in)	Min. Anchorage depth* (in)
CWHQ	1/4"	2 3/16"	1/4"	100	1 3/4"	1"

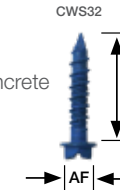
* For further information contact Gripple Technical Services



Anchoring Solutions

Concrete/Wood Screw

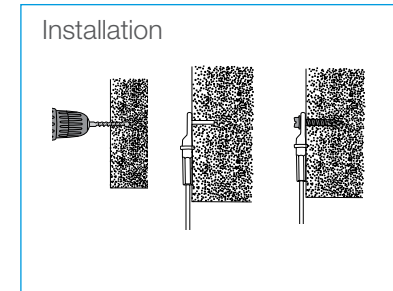
- Easy-fit slotted/hex head screw suitable for wood and non-cracked concrete
- Ideal for use with the Eyelet and 90° Eyelet End Fixings (page 56-57)
- Removable; excellent corrosion resistance



3:1 Safety rating - load rating is dependant on base material

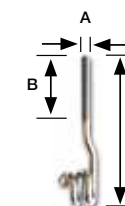
Product code	A (in)	AF (in)	Max. SWL (lbs)	Hole Ø (in)	Min. Hole depth* (in)	Min. Anchorage depth* (in)
CWS32	1 1/4"	5/16"	100	7/32"	1 3/8"	1 1/4"

* For further information contact Gripple Technical Services



Pigtail

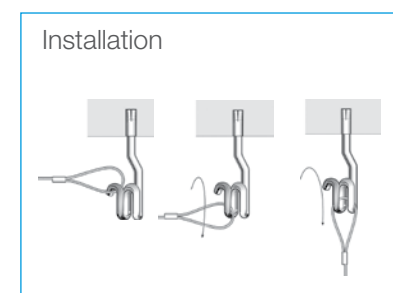
- Fast and secure anchor suitable for use with the Loop End Fixing (page 52)
- Ideal for use with the Drop-In Anchor (page 66)
- Allows Loop to be removed for maintenance



5:1 Safety rating - dependent on base material

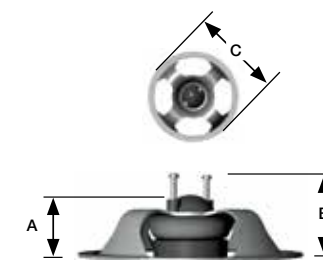
Product code	A	B (in)	C (in)	Max. SWL (lbs)
PIGTAIL6-20MM	1/4"	1 3/16"	3"	200
PIGTAIL6-45MM	1/4"	1 3/4"	4"	200

* For further information contact Gripple Technical Services



Spider Insert

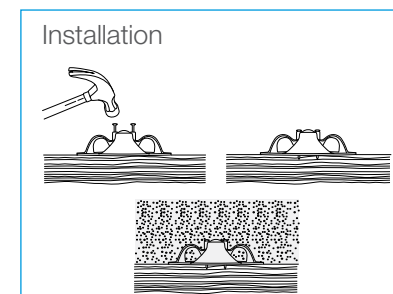
- Cast-in-place concrete solution
- Internally threaded version for use with 3/8" threaded rod or Gripple Stud Hanger
- Max. Safe Working Load: 700 lbs



3:1 Safety rating

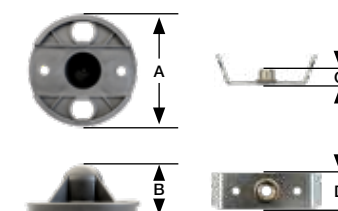
Product code	A (in)	B (in)	C (in)
SPIDER-3/8TH	1 1/8"	1 5/8"	4 1/2"

* For further information contact Gripple Technical Services



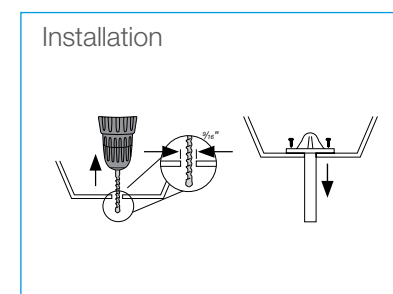
Metal Deck Insert

- Pre-insert solution for metal decks
- Internally threaded version for use with 3/8" threaded rod
- Max. Safe Working Load: 700 lbs



3:1 Safety rating

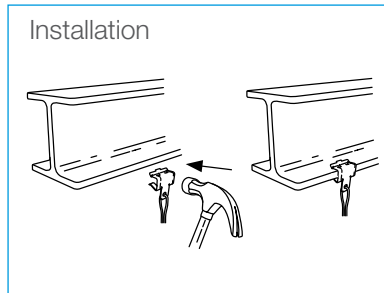
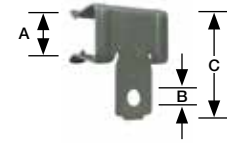
Product code	A (in)	B (in)	C (in)	D (in) Ø
MDI-Y-3/8TH	2 3/4"	1"	11/16"	7/32"



Beams & Purlins

Beam Clip

- Hammer-on installation
- Accommodates a wide variety of flange thicknesses
- Ideal for use with the Hook End Fixing (page 53)

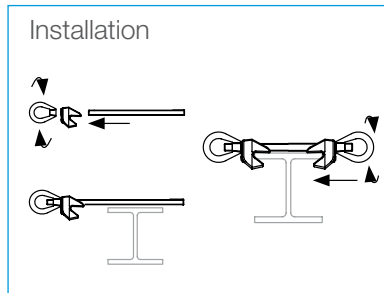
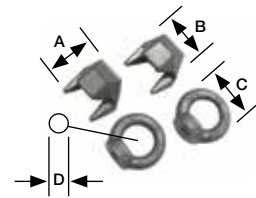


3:1 Safety rating

Product code	A (in) Flange Thickness	B (in) Ø	C (in)	Max. SWL (lbs)
GCB24	1/16" - 1/8"	9/32"	1 3/16"	160
GCB59	1/8" - 1/4"	9/32"	1 1/4"	200
GCB1016	5/16" - 1/2"	9/32"	1 11/16"	200
GCB1720	9/16" - 3/4"	9/32"	1 7/8"	200

GF Bracket

- Designed for clamping onto an I-Beam section
- Suitable for 1/4" - 1/2" flange thickness
- Use with 1/2" threaded rod (not supplied)
- Ideal for use with Cable Strut Kits (page 42)

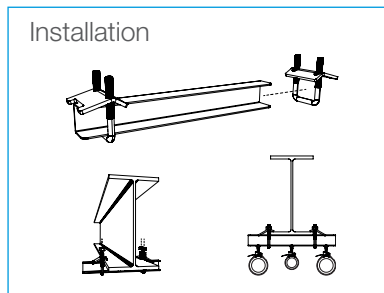
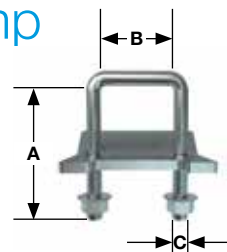


1.7:1 Safety rating

Product code	Flange Thickness (in)	A (in)	B (in)	C (in)	D (in)	Max. SWL (lbs)
GF12-EYENUT	1/4" - 1/2"	1 3/4"	1 7/8"	2 3/16"	1 3/16"	750
GF16-EYENUT	5/16" - 5/8"	2 1/4"	2 7/16"	2 3/16"	1 3/16"	750
GF20-EYENUT	3/8" - 3/4"	2 61/64"	2 41/64"	2 3/16"	1 3/16"	750

Pipe Bracket Beam Clamp

- Allows brackets to be fixed directly to beams for pipe runs close to the deck
- Suitable for a wide range of flange sizes (up to 1.57")
- Quick and easy installation
- Robust, mild steel construction
- For use with Gripple Pipe Support Bracket (page 45)

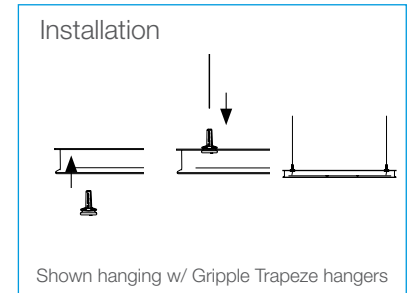
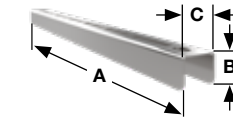


Product code	A	B	C	Load Rating (lbs)
PB-BEAM-CLAMP-2P	3.26"	1.77"	M10	200

Brackets & Attachments

Pipe Bracket

- For use with Gripple QT Pipe Clamp and Threaded Clamp (pages 44 & 48)
- Can be bolted directly to soffit or wall, or suspended from the soffit using threaded rod or Gripple UniGrip Hangers
- Eliminates the need for cutting channel on site

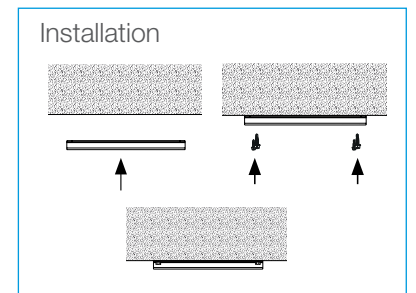
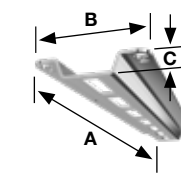


1.6:1 Safety rating

Product code	A (in)	B (in)	C (in)	Max. Single Point Load (lbs)	Max. Bracket load (above mount)
PB1FT	12"	1 3/8"	1 11/16"	1000	1900
PB2FT	24"	1 3/8"	1 11/16"	500	1400
PB3FT	36"	1 3/8"	1 11/16"	750	1600
PB4FT	48"	1 3/8"	1 11/16"	500	1400

Low Profile Bracket

- Can be bolted directly to soffit or wall
- Eliminating the need for cutting channel on site, allowing more productive use of labor
- For use with Gripple QT Compact Clamp (page 46)

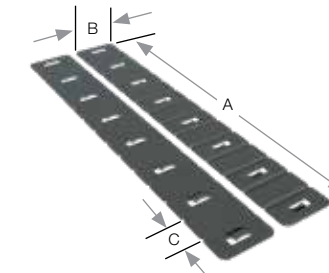


3:1 Safety rating

Product code	A (in)	B (in)	C (in)	Max. Single Point Load (lbs)	Max. Bracket load
LPB1FT	14"	3 5/64"	1/2"	170	510
LPB2FT	26"	3 5/64"	1/2"	170	850
LPB3FT	37"	3 5/64"	1/2"	170	1190
LPB4FT	47"	3 5/64"	1/2"	170	1360

Spreader Band

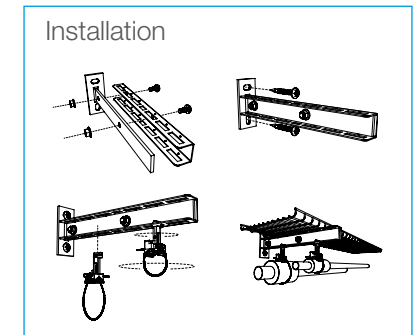
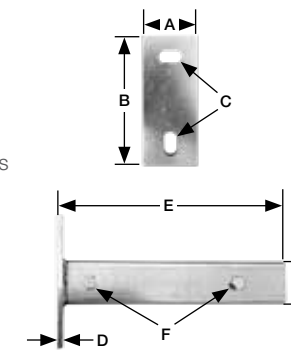
- Distributes the weight of the suspended service more evenly along the cable
- Snap to length as required; live hinges allow for flexibility of use
- Easily attaches to cable with integrated clips
- Ideal for use with insulation, fabric duct and bundled cable



Product code	A (in)	B (in)	C (in)
SPREADER-BAND	12"	1 5/8"	3/4"

Wall Bracket

- Designed to support piping and/or electrical services when installed cantilevered and parallel to the wall
- Wall Brackets are supplied with Pipe Brackets and Quick Twist Pipe Clamps featuring quarter turn attachment
- Can be bolted directly to soffit or wall



Product code	A (in)	B (in)	C (in)	D (in)	E (in)	F (in)	G (in)
WALL-BRACKET	1.96	4.72	Ø 0.49	0.23	9.68	Ø 0.39	1.49
3 lengths available	1.96	4.72	Ø 0.49	0.23	13.62	Ø 0.39	1.49
	1.96	4.72	Ø 0.49	0.23	17.55	Ø 0.39	1.49

Brackets & Attachments

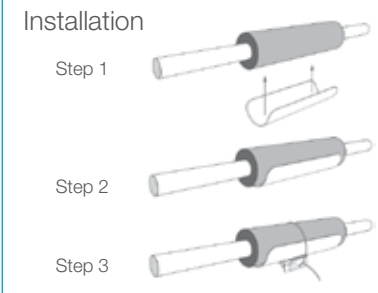
Roundup Plus Saddle

- 180° metal pipe insulation saddle, 22 gauge galvanized steel
- Peel & stick tape secures the saddle to the pipe insulation
- 12" length with various saddle diameters 2" thru 6.5"
- Ideal for use with QT Pipe Clamp, QT Compact Clamp, and Threaded Clamp (pages 44-48)



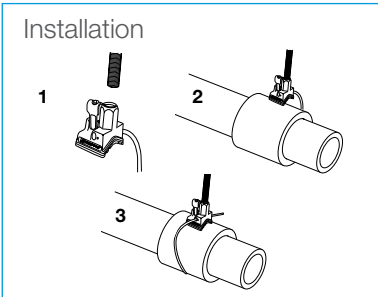
Product code	A (in)	B (in)
BIS*	12"	X"

* x = Saddle diameter: 2, 2.5, 3, 3.5, 4, 4.5, 5, 5.5, 6.5



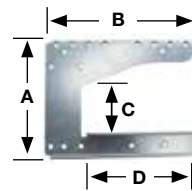
Pipe Insulation Collars

- For use with all Gripple pipe clamps
- Universal - for mild steel, stainless steel, copper and plastic pipes in a range of sizes
- High performance - reduced heat loss & highly moisture resistant
- Temperature range: Calsil 20°F to +1200°F
Armafix -297°C to +221°C
- Thermal conductivity: Calsil 0.40 BTU · in/h ft² · °F
Armafix 0.27 BTU · in/h ft² · °F



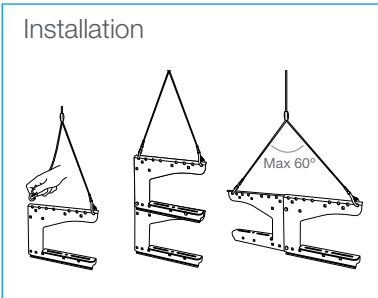
G-Bracket

- Made for supporting cable tray and basket
- Brackets can be easily joined together either vertically or horizontally with coupling bolts
- Ideal for use with the Y-Fit and Y-Fit Accessory Hangers (page 40)



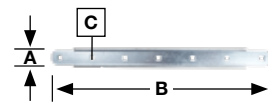
3:1 Safety rating

Product code	A (in)	B (in)	C (in)	D (in)	Max. SWL (lbs)
G-BRACKET-100	7 3/4"	6 1/2"	3"	4 3/4"	130
G-BRACKET-200	7 7/8"	10 1/4"	3"	7 7/8"	130
G-BRACKET-300	7 7/8"	14 1/2"	3"	12 5/8"	130



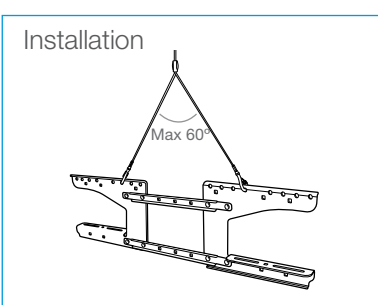
G-Spacer

- Joins two G-Brackets together, either vertically or horizontally allowing a central gap (max. 12 in)
- Links different sizes of G-Bracket together
- Adjustable



5:1 Safety rating

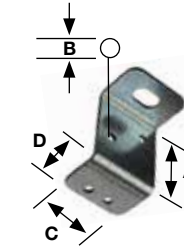
Product code	A (in)	B (in)	C (in)
G-SPACER	1 1/32"	13"	1/4" x 1/4"



Brackets & Attachments

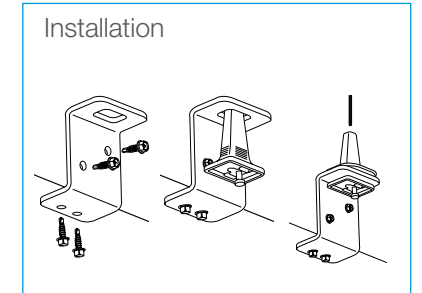
Trapeze Bracket

- Easily attached to rectangular ducting with #10 3/4" self-drilling screws
- Replaces the need for threaded rod or duct strap
- Rigid 14 gauge steel thickness with galvanized finish
- Use with No. 2 or No. 3 UniGrip Hanger (page 34)



5:1 Safety rating

Product code	A (in)	B (in)	C (in)	D (in)	Max. SWL (lbs)
TPZ-BRACKET	1 7/8"	3/16"	1 1/2"	1"	200



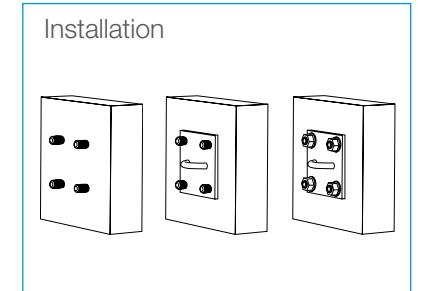
Cable Strut Wall Bracket

- 4" x 4" back plate for concrete walls and wooden beams as an attachment point for Cable Strut
- 4 x 7/16" diameter mounting holes
- 2 1/2" hole spacing
- 3/8" ring for easy cable attachment
- Zinc plated finish (minimum 5 μ)



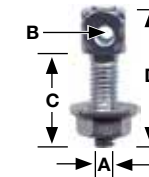
3:1 Safety rating

Product code	A (in)	B (in)	C (in)	D (in)	Max. SWL (lbs)
CAT-BRACKET-100-MM	4"	1 3/4"	2 1/2"	7/16"	750



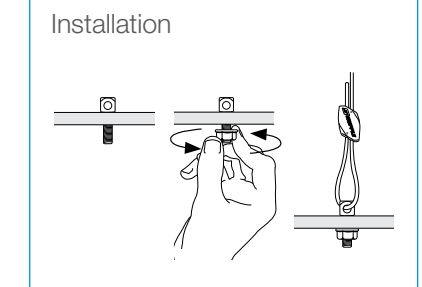
M6 & M8 Adapter

- Ideal for fixing to many services such as light fixtures
- Can be fixed into concrete using a metric Drop-In Anchor (page 66)
- Available in metric threads only



5:1 Safety rating - dependent on material

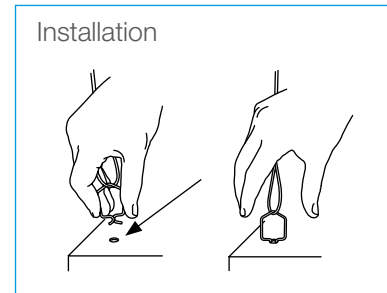
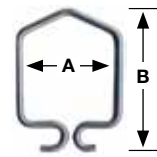
Product code	A	B (in)	C (in)	D (in)	Max. SWL (lbs)
ADP-M6	M6	1/8"	3/4"	1"	200
ADP-M8	M8	1/4"	1"	1 1/2"	500



Adapters

Spring Clip

- Used for attaching to top of light fixture with 1/4" hole
- Ideal for use with the Standard Hanger or Express Hanger (page 28-29)

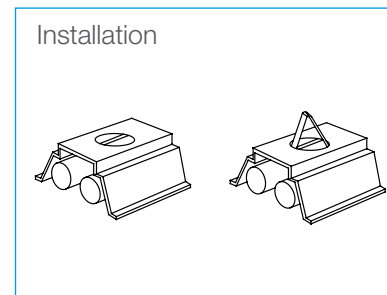
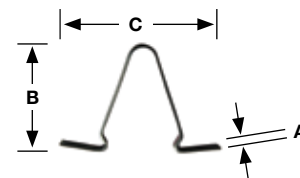


3:1 Safety rating - dependent on material thickness

Product code	A (in)	B (in)	Max. SWL (lbs)
CLIP-SPG-68	1"	1 1/2"	66

LSK Clip

- General purpose clip to support light fittings
- Steel with zinc plated finish
- Designed to fit into 7/8" knockouts on top of light fixtures

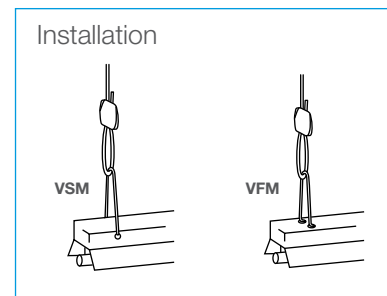
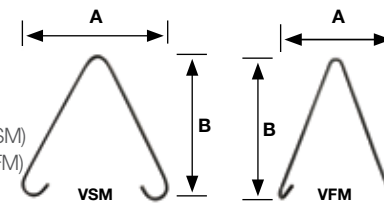


3:1 Safety rating

Product code	Hole Ø	A (in)	B (in)	C (in)	Max. SWL (lbs)
CLIP-LSK	7/8"	7/8"	1 3/8"	2"	18

V-Bracket

- Fits into mounting holes of light fixtures
- Steel with zinc plated finish
- Side mount bracket for side of light fixture (VSM)
- Front mount bracket for top of light fixture (VFM)

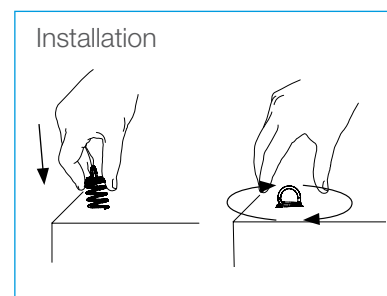
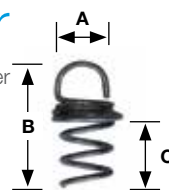


5:1 Safety rating

Product code	A (in)	B (in)	Max. SWL (lbs)
BRACKET-VSM	3 1/8"	4 5/8"	30
BRACKET-VFM	2 9/16"	3 7/8"	30

Acoustic Panel Spring Anchor

- Ideal for use with the Standard Hanger, Angel Hook or Express Hanger
- No tools required for installation
- ASA-S for panels up to 40mm in depth (1 9/16")
- ASA-L for panels up to 70mm in depth (2 3/4")
- Maximum load ratings will vary. Contact Gripple Technical Services for more information

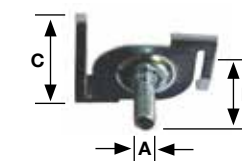


Product Code	A (in)	B (in)	C (in)
ASA-S	5/8"	1 7/8"	1"
ASA-L	1 1/16"	3 7/8"	2 7/8"

Adapters

T-Bar Twist Clip

- Ideal for attaching to suspended ceilings
- Integral 1/4" male thread
- Ideal for use with the 1/4" Barrel End Fixing (page 55)
- Suitable for 1" T-Bar

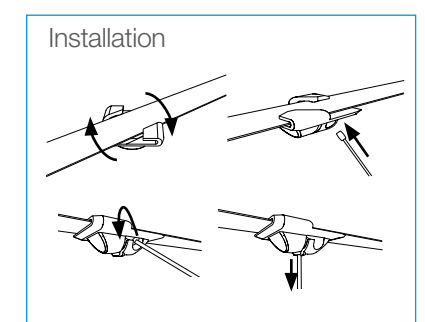
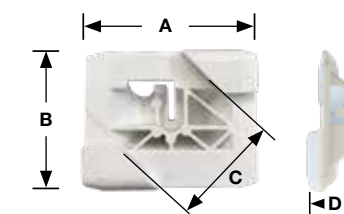


5:1 Safety rating

Product code	A	B (in)	C (in)	Max. SWL (lbs)
TBAR-CLIP-Q	1/4"	5/8"	1"	45

Twist Clip (White)

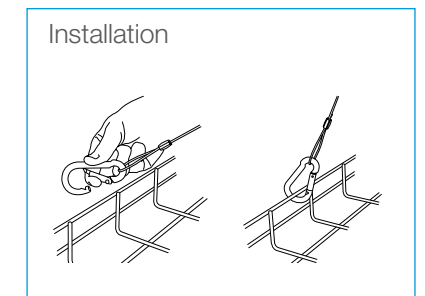
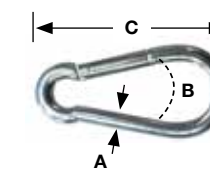
- Designed for use on 1" T-Bar grid ceilings
- Ideal for use with No. 1 End Stop hanger
- Quick and easy to install - no tools required
- Will not cause damage to the T-Bar grid



A (in)	B (in)	C (in)	D (in)
1 9/16"	1 1/4"	1"	9/16"

Karabiner

- Versatile fixing, easy to attach and detach
- For use with Loop End Fixing (page 52)
- Available in Stainless Steel

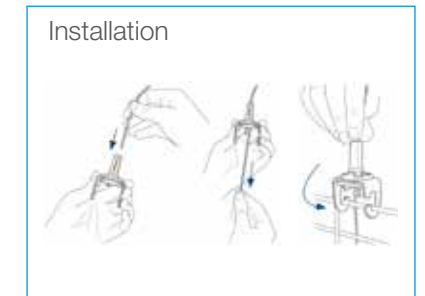
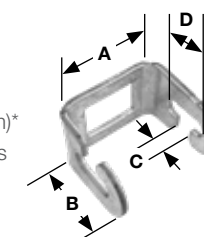


5:1 Safety rating

Product code	A (in)	B (in)	C (in)	Max. SWL (lbs)
KARA-6-60	1/4"	5/16"	2 3/8"	100
KARA-6-60-S	1/4"	5/16"	2 3/8"	100
KARA-8-80	5/16"	1/2"	3 5/32"	200
KARA-8-80-S	5/16"	1/2"	3 5/32"	200

Cable Basket Adapter

- For use with UniGrip No. 2 (page 35)
 - To suspend cable baskets with wire diameter up to 1/4" (6mm)*
 - Can be used to suspend multi-tier cable basket configurations
- * Per cable basket manufacturer recommendations



5:1 Safety rating

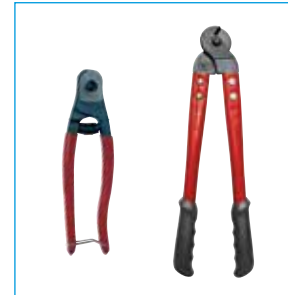
Product code	A (in)	B (in)	C (in)	D (in)
CB6	1 3/8"	1 1/4"	1/4"	3/8"

Tools & Finishing Accessories

Cable Cutters

- Hardened, durable jaws
- Two sizes available – pocket size for use up to 1/8" diameter cable, or large, providing greater leverage for up to 1/4" diameter cable

Product code:
CUTTER-GRIPPLE
CUTTER-6MM



Release Keys

- Use for adjusting or releasing the Standard fastener (pre-load)
- Two sizes available – for Gripple hangers No.1- No.3 and Gripple hangers No.4, No.5 and Cable Strut kits. For D3 and D6 use No.1 - No.3 adjustment key.

Product code:
KEY-FLAG
(for sizes No.1 to No.3)
KEY-HF45-LK
(for sizes No.4, No.5 and Cable Strut)



Drop-In Anchor Setting Punch

- Leaves four permanent indents on the anchor to advise correct installation
- Ergonomic handle with hand protection
- Two sizes available to suit 1/4" & 3/8" anchor

Product code:
MAN-PUNCH-1/4
MAN-PUNCH-3/8



Protective Sleeving

- Protective black tubing to prevent contact between dissimilar metals or for aesthetic enhancement
- Ideal for use on No.2 & No.3 cable

Product code:
SLEEVE-2MM-FT
SLEEVE-3MM-FT



Tools & Finishing Accessories

Wire Anchor Installation Tool

- Tool securely fits onto the wire anchor to hammer into place

Product code:
WIRE-ANCHOR-TOOL



Tensioning Tool

- Applies tension easily with the 6:1 gear drive mechanism
- Designed control mechanism to prevent over tensioning
- Compact, easy to handle, operate and carry
- For use with 1/4" Cable Strut kits

Product code:
TOOL-5-4BX-INC



Corner Saddle

- A right angled reinforced molding to prevent cable friction on rectangular ducting
- For use with No. 1-3 cable hanger

Product code:
CORNER-SADDLE

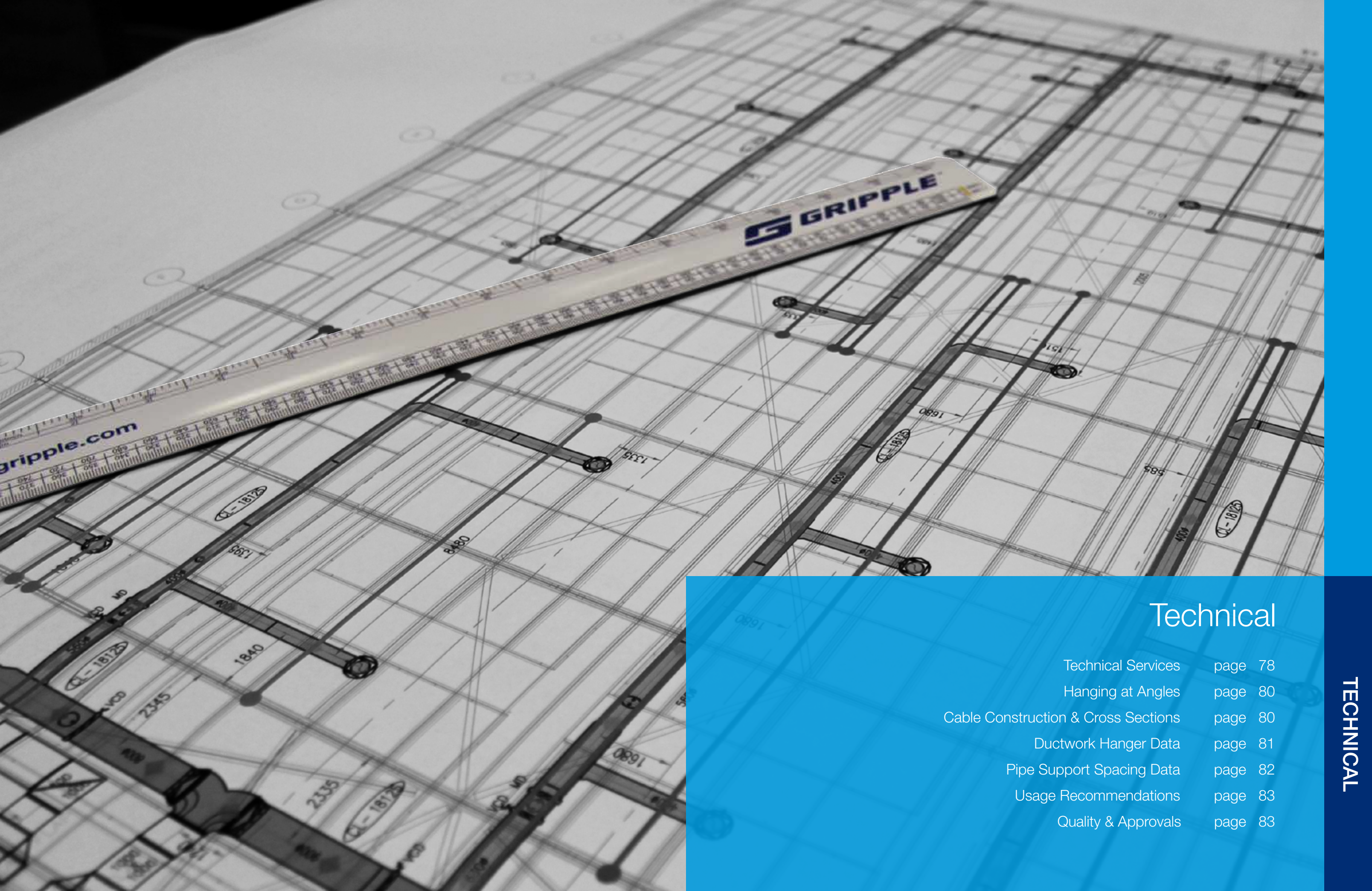


Twister

- Keeps tail wires neat and tidy
- Grey aesthetic finish - blends into background
- For use with No.2 and No.3 cable

Product code:
TWISTER-100BB





Technical

Technical Services	page 78
Hanging at Angles	page 80
Cable Construction & Cross Sections	page 80
Ductwork Hanger Data	page 81
Pipe Support Spacing Data	page 82
Usage Recommendations	page 83
Quality & Approvals	page 83

Overview of Technical Services Department Capabilities

Gripple is a manufacturer of Cable Hanger and Bracing Solutions for all types of suspended services, with our North American headquarters located in Aurora, Illinois, and other locations around the world in the UK, Europe, and India.

Gripple's Technical Services Department is comprised of a dedicated and detail-oriented team of specialists who offer their technical services free of charge to contractors to assist in the bidding process. Simply put, Gripple's Technical Services Department reviews the contractor's drawings and provides the contractor with the recommended Gripple Cable Hanger or Bracing products and quantities for their project.



HVAC, Mechanical, Electrical, and MTO's (Material Take Offs)

Gripple offers a variety of Cable Hanger products for suspending all types of HVAC, Mechanical, Piping, and Electrical services. No matter the service being suspended, or the type of structure you're suspending from, Gripple has a solution.

By deciding to benefit from our complimentary Take Off services, the following process ensures that with little effort, your full project can be prepared for bidding:

1. Engineer/Contractor submits project drawings to your Gripple Territory Manager
2. Gripple Technical Team marks up the drawings with exact requirements (hanger type, spacings and quantity) for all services*
3. Gripple Technical Team generates concise Bill of Materials, and a "no obligation" quote is provided
4. Once order is placed, product is packaged and labelled to specific project requirements (e.g. Level Two, Zone One, Ductwork) to ensure ease of identification and use on-site
5. Product is dispatched to the job site, and installed accordingly by contractor

In addition to the above, your local Gripple Territory Manager can also provide supporting product submittal information and site visits upon commencement of the project.

* We provide our Take Off service for any and all required services on a project basis.



Cable Strut Take Offs

Gripple Cable Strut Kits create secure, overhead spans by running high strength cables horizontally between two attachment points. A C-Clip then twists and locks onto any point along the cable, offering a suspension point for a Gripple Cable Hanger, and giving complete control of horizontal and vertical positioning of the service being suspended. Installed substantially faster and adjusted considerably easier, Cable Strut systems can be used to hang all types of services in places that would otherwise be impossible.

The Gripple Technical Team can offer assistance and recommendations for installations being suspended on Cable Strut with regard to:

- Locations and length of the Cable Strut runs
- Safe Working Loads of the Cable Strut runs
- Intermediate support points
- Number of C-Clip Hangers that can be accommodated
- Expected sag

Contact your Gripple Territory Manager regarding Take Off services for your project!

Seismic Bracing for Nonstructural Building Components

Gripple provides Seismic Risk Management. We take the liability issues away from you by providing a complete seismic solution – the risk management you need – that encompasses beginning-to-end Engineering services, as well as a full line of Seismic Bracing and Vibration Management products for use in seismic zones or AT/FP (Anti-Terrorism/Force Protection) situations.

The complex and technical nature of seismic bracing requirements, industry regulations, and life-safety issues necessitates a partner like Gripple. We begin by providing you with the following:

- **Complimentary Budget Estimating** – an all-inclusive estimate you can work into your budget that includes (where applicable) Seismic Cable Bracing, Vibration Management products, and Engineering Services.

Should you move ahead with Gripple on your seismic bracing project, we offer you the following Engineering services for an additional fee:

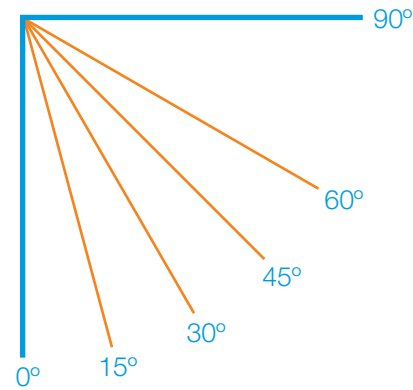
- **PE Stamped Drawings** - noting the proper location of Gripple Seismic Cable Bracing and Vibration Management products, per the scope of the project.
- **BIM Modeling and Clash Detection** - provided as required by design scope. Includes 2D, 3D, AutoCAD, and/or REVIT.
- **Coordination and Site Reviews** - with Structural Engineer and Gripple to ensure proper installation of Gripple products.



Hanging at Angles

The load rating for a Gripple Hanger is based on the suspension being hung vertically. If the cable is at an angle, an additional sideways force is applied which increases the load on the suspension. The net effect is shown in the table below.

Hanger size	Maximum load (lbs) at an angle from vertical				
	0°	15°	30°	45°	60°
No.1	25	24	21	17	12
No.2	100	96	86	70	50
No.3	200	192	172	140	100
No.4	495	475	425	346	247
No.5	715	686	614	500	357
Load %	100	96	86	70	50

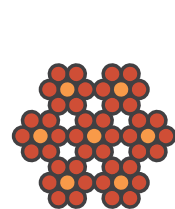


For Gripple hanger, hung at an angle in excess of 60° from vertical, contact Gripple Technical Services.

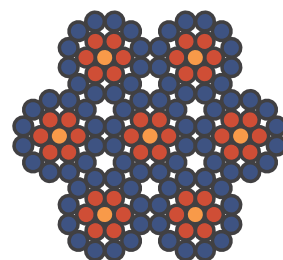
Cable Construction & Cross Sections

The cable used within our product ranges is galvanized high tensile steel cable, manufactured in accordance with the norm EN 12385.

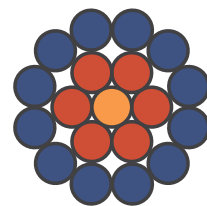
Cable size	Diameter (in)	Construction
No.1	1/16"	7 x 7 or 1 x 19
No.2	5/64"	7 x 7 or 1 x 19
No.3	1/8"	7 x 7 or 1 x 19
No.4	3/16"	7 x 19
No.5	1/4"	7 x 19



7 x 7 (6/1)



7 x 19 (12/6/1)



1 x 19 (12/6/1)

Ductwork Hanger Data

Rectangular duct (unlined), based on 8' hanging space and two hanger method.

Rect. Duct size (height + width)	Weight / ft.		Weight / 8 ft.	Gripple Hanger Size Needed (2 per 8ft.) *	Safety Factor
	20 Gauge	22 Gauge			
80 x 20"	28.10	--	224.80	3	8:1
70 x 24"	26.44	--	211.52	3	9:1
66 x 24"	25.34	--	202.72	3	9:1
50 x 20"	19.82	--	158.56	2	12:1
40 x 22"	19.27	--	154.16	2	12:1
36 x 18"	--	13.08	104.64	2	9:1
24 x 12"	--	8.86	70.88	2	14:1
16 x 16"	--	7.92	63.36	2	15:1
14 x 10"	--	6.05	48.40	2	20:1
12 x 6"	--	4.64	37.12	2	26:1
10 x 6"	--	4.17	33.36	2	29:1
8 x 6"	--	4.17	33.36	2	29:1

*No.2 Gripple = 100 lbs SWL per hanger, 5:1 safety factor
No.3 Gripple = 200 lbs SWL per hanger, 5:1 safety factor

Spiral duct, single wall, based on 10' hanging space.

Diameter	Circumference	Gripple Hanger Size		
		26 Gauge	24 Gauge	22 Gauge
12"	3' 2"	2	2	2
16"	4' 2"	2	2	2
20"	5' 3"	2	2	2
24"	6' 3"	2	2	2
28"	7' 4"	2	2	3
32"	8' 5"	2	3	3
36"	9' 5"	2	3	3
40"	10' 6"	3	3	3
44"	11' 6"	3	3	3
48"	12' 7"	3	3	3
52"	13' 7"	3	3	4
56"	14' 8"	3	3	4
60"	15' 8"	3	4	4

Spiral duct, double wall, based on 10' hanging space.

Inside diameter (in)	Outside gauge	Inside gauge	Wt/Ft (lbs)	Gripple size
12"	26	26	8.0	2
16"	24	24	11.0	3
20"	24	24	13.4	3
24"	24	24	18.0	3
28"	22	24	22.3	4
32"	22	24	25.2	4
36"	20	22	31.2	4
40"	20	22	36.7	4
44"	20	22	40.2	4
48"	20	22	43.8	4
52"	18	20	56.2	5
56"	18	20	60.8	5

Please note, calculations do not take into account weight of connectors.

Hanger length charts

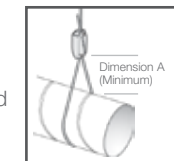
Standard hanging (for spiral duct 36" and smaller)

Duct size (diameter)	Dim. A (minimum)	Gripple cable length needed (ft)						
		Elevation from roof to top of duct						
		5'	8'	10'	12'	15'	18'	20'
12"	3"	10'	15'	15'	20'	20'	25'	25'
14"	3.5"	10'	15'	15'	20'	20'	25'	25'
16"	4"	10'	15'	15'	20'	20'	25'	25'
18"	4.5"	10'	15'	15'	20'	20'	25'	25'
20"	5"	15'	15'	20'	20'	25'	25'	30'
22"	5.5"	15'	15'	20'	20'	25'	25'	30'
24"	6"	15'	15'	20'	20'	25'	25'	30'
26"	6.5"	15'	15'	20'	20'	25'	25'	30'
28"	7"	15'	20'	20'	20'	25'	30'	30'
30"	7.5"	15'	20'	20'	20'	25'	30'	30'
32"	8"	15'	20'	20'	25'	25'	30'	30'
34"	8.5"	15'	20'	20'	25'	25'	30'	30'
36"	9"	20'	20'	25'	25'	30'	30'	35'

Cradle hanging (for spiral duct larger than 36")

Duct size (diameter)	Gripple cable length needed (ft)						
	Elevation from roof to top of duct						
	5'	8'	10'	12'	15'	18'	20'
36"	20'	30'	30'	35'	40'	50'	50'
38"	20'	30'	30'	35'	40'	50'	50'
40"	25'	30'	35'	35'	45'	50'	55'
44"	25'	30'	35'	40'	45'	50'	55'
46"	25'	30'	35'	40'	45'	50'	55'
48"	25'	30'	35'	40'	45'	50'	55'
50"	25'	30'	35'	40'	45'	50'	55'
52"	25'	30'	35'	40'	45'	50'	55'
56"	25'	35'	35'	40'	45'	55'	55'
60"	30'	35'	40'	40'	50'	55'	56'

- All hangers are available in 5', 10', 15', 20' and 30' standard lengths
- Lengths rounded up to nearest 5 ft increment
- Size of cable hanger (No.1 - No.5) will be based on weight of duct and hanger spacing
- Allow spacing equal to 1/4" of duct diameter between the Gripple fastener and duct (Dim. A)



- All hangers are available in 5', 10', 15', 20' and 30' standard lengths
- Lengths rounded up to nearest 5 ft increment
- Size of cable hanger (No.1 - No.5) will be based on weight of duct and hanger spacing
- Duct larger than 36" should be hung in 'cradle' fashion, with the hanger secured at two points to the roof / ceiling and the cable supporting the duct underneath



Pipe Support Spacing Data

Recommended minimum support spacing for pipe brackets and equivalent load per clamp when brackets are spaced as recommended:

Copper tube	Tube size (NPS)	Actual outside diameter		Tube weight per foot	Water weight per foot	Total weight per foot Tube & Water	Tube support spacing for horizontal runs (ref. MSS SP-58)	Weight per clamp at recommended support spacing
	inches	inches		lb/ft	lb/ft	lb/ft	ft	lb
ASTM B88 (Type K)	1/2	5/8	0.625	0.344	0.095	0.44	5.0	2.2
	5/8	3/4	0.750	0.418	0.145	0.56	5.0	2.8
	3/4	7/8	0.875	0.641	0.189	0.83	5.0	4.1
	1	1 1/8	1.125	0.837	0.337	1.17	6.0	7.0
	1 1/4	1 3/8	1.375	1.040	0.528	1.57	7.0	11.0
	1 1/2	1 5/8	1.625	1.360	0.746	2.11	8.0	16.9
	2	2 1/8	2.125	2.060	1.306	3.37	8.0	26.9
	2 1/2	2 5/8	2.625	2.920	2.018	4.94	9.0	44.4
	3	3 1/8	3.125	4.000	2.876	6.88	10.0	68.8
3 1/2	3 5/8	3.625	5.120	3.900	9.02	11.0	99.2	

Steel Pipe	Tube size (NPS)	Actual outside diameter		Tube weight per foot	Water weight per foot	Total weight per foot Tube & Water	Tube support spacing for horizontal runs (ref. MSS SP-58)	Weight per clamp at recommended support spacing
	inches	inches		lb/ft	lb/ft	lb/ft	ft	lb
ANSI Schedule 40	1/2		0.84	0.85	0.131	0.98	7.0	6.9
	3/4		1.05	1.13	0.234	1.36	7.0	9.6
	1		1.32	1.68	0.382	2.06	7.0	14.4
	1 1/4		1.66	2.27	0.648	2.92	7.0	20.4
	1 1/2		1.9	2.72	0.871	3.59	9.0	32.3
	2		2.38	3.65	1.472	5.12	10.0	51.2
	2 1/2		2.88	5.79	2.093	7.88	11.0	86.7
	3		3.5	7.58	3.187	10.77	9.0 (12)	96.9
	4		4.50	10.79	5.510	16.30	9.0 (14)	146.7
	6		6.63	18.97	12.510	31.48	9.0 (17)	283.3

Usage Recommendations

Failure to comply with these recommendations may result in product malfunction and possible damage to property or person and will invalidate the Gripple guarantee. Gripple products are guaranteed to be free from defects in materials and workmanship in accordance with our terms and conditions. No other warranty, whether express or implied, including any warranty of merchantability or fitness for purpose shall exist in connection with the sale or use of any Gripple product.

Full technical information and installation instructions should be obtained directly from Gripple Inc., or via the website www.gripple.com.

Please adhere to the following usage recommendations:



Loads

Always operate the product within its stated Safe Working Load range.



Cable

Always use the Gripple fastener supplied with Gripple cable. Never use on coated cable or other cable. Trim any damaged filaments with the cable cutter before use.



Lifting

Do not use for lifting, either by crane or as part of a pulley system. Suspend static loads only.



Environment

Do not use in chlorinated or chemically corrosive atmospheres. Standard hangers are for use in dry and air conditioned environments only. Stainless steel hangers should be considered for high to saturated humid environments after validation by a competent person. Not suitable for swimming pool environments.



Installation

Do not walk or stand on the Gripple product installation unless expressly designed for this purpose.



Impact

If there is potential for impact on the cable suspension or suspended services, seek advice from Gripple Technical Services prior to installation.



Painting

Do not paint the cable or fastener prior to installation. Ensure that the hanger is in its final position prior to applying any paint to the cable assembly. Do not move the fastener after painting.



Hanging at an Angle to Vertical

Ensure that the load calculation considers the effect of 'side load'. For example, at an angle of 60° to vertical, the SWL is effectively reduced by 50%.



Lubrication

Do not apply oil or any other lubricant to the cable fastener, or any other part of the assembly.



Ducting: When installing included angle teardrop hangers on round/spiral ducting or pipes, the final included angle of the assembly should not exceed 60°.



Joining

Never join two ends together in-line.



Y-Fit: Legs on Y-Fit not to be installed greater than 60°.

Quality & Approvals

Gripple UK is ISO 9001:2008 and ISO 14001 certified. Gripple products meet the highest standards of quality, with the lowest environmental impact. Gripple products hold the following approvals, certifications, and verifications:



Gripple's policy is one of continuous development and innovation. We therefore reserve the right to alter specifications, etc. without notice.

www.gripple.com
grippleinc@gripple.com



Gripple Inc

1611 Emily Lane
Aurora
Illinois 60502
USA

T | +1 866 474 7753
F | +1 800 654 0689
E | grippleinc@gripple.com

Gripple Canada Inc

7015 Ordan Drive
Unit #15 Mississauga
Ontario L5T 1Y2
CAN

T | +1 905 458 8700
F | +1 800 654 0689
E | grippleinc@gripple.com

Gripple Ltd (Headquarters)

The Old West Gun Works
Savile Street East
Sheffield S4 7UQ
UK

T | +44 (0) 800 018 4264
F | +44 (0) 114 275 1155
E | info@gripple.com

Gripple Europe SARL

1, rue du commerce
BP 37
67211 Obernai Cedex
France

T | +33 (0)3 88 95 44 95
F | +33 (0)3 88 95 08 78
E | frinfo@gripple.com

Gripple India

B 95/2
Naraina Industrial Area
Phase I
New Delhi-110028

T | +91 11-40582703
F | +91 11-40582703
E | ininfo@gripple.com

WE ARE SOCIAL
FOLLOW OUR UPDATES

