



CONNECT AND PROTECT

# nVent CADDY Pyramid

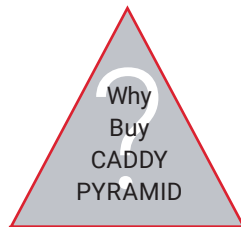
Rooftop Support System

nvent



CADDY

# Plumbing & HVAC Applications



**FOR ENGINEERS AND CONSULTANTS:**

## **CHALLENGE:**

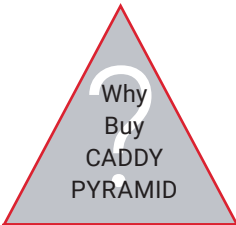
- Properly support heavy loads
- Minimize the chance of point loading or abrading the roof membrane
- Ensure chemical compatibility with anything you place on the roof membrane

## **NVENT CADDY PYRAMID SOLUTION:**

- Pyramid offers a broad portfolio compatible with most roof surfaces, including single-ply, bituminous, metal and spray foam
- Pyramid provides excellent load distribution with some of the industry's best load ratings
- Pyramid minimizes point loading and roof abrasion
- Pyramid is UV stable, corrosion resistant, and durable over an extensive temperature range

# Electrical Applications





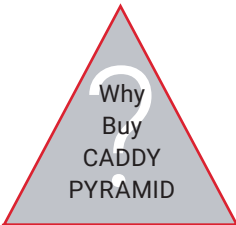
**FOR BUILDING OWNERS:**

**CHALLENGE:**

- Roofs not only protect some of the most valuable assets, they often represent a significant cost to replace and maintain
- Substandard materials and methods can increase the chance of roof damage
- Increasingly, roofs are seen as prime real estate and are being utilized for equipment placement, alternative energy systems, and as green space

**PYRAMID SOLUTION:**

- Pyramid is extremely roof compatible
- Pyramid is designed to minimize the chance of damage to roofs
- Pyramid is fast and easy to install, minimizing costs
- Pyramid provides an aesthetically pleasing, flexible engineered solution designed to meet the challenges of densely populated roofs



**FOR CONTRACTORS AND INSTALLERS:**

**CHALLENGE:**

- Meet the project scope and stay within budget
- Provide a high quality installation
- Need a fast and easy to install solution
- Adapt to a broad range of applications and roof materials

**PYRAMID SOLUTION:**

- Pyramid is designed to get installers on and off the roof quickly
- Pyramid creates an aesthetically pleasing, high quality solution
- Pyramid offers a broad portfolio of solutions that simplify material management

**Equipment Support Applications**



Pyramid rooftop supports are a surface mounted solution for supporting electrical and mechanical applications on a variety of roof surfaces.

They offer superior load capacity and dramatically reduce installation time by replacing slow, heavy and labor-intensive methods for support of pipe, conduit, duct, cable tray and equipment.

Unlike wood blocks, Pyramid supports are specifically designed for rooftop applications, incorporating unique materials and finishes that protect roof membranes and provide superior corrosion protection.

Hot-dip galvanized for superior corrosion protection

UV stabilized for long lasting performance

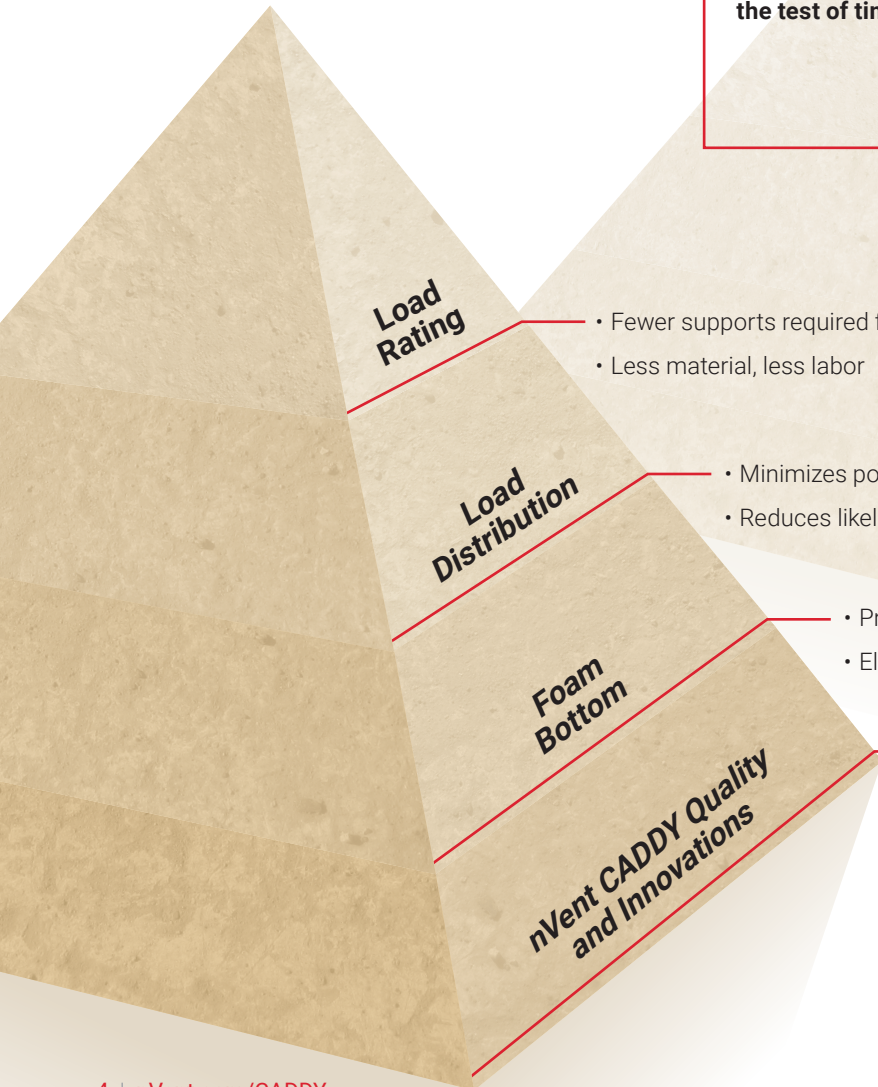
Foam bottom offers low abrasion interface for better roof membrane protection

Compatible with roof surfaces including single ply, bituminous, metal and spray foam



**“Our clients’ roofs are a significant investment. Protecting these assets requires the use of engineered solutions that can withstand the test of time, which is why we have standardized on the Pyramid family of roof top supports.”**

Chris Denman, Vice President and Partner  
Roof Management, LLC



**Load Rating**

- Fewer supports required for the same load
- Less material, less labor

**Load Distribution**

- Minimizes point loading and stress concentrations
- Reduces likelihood of roof membrane damage

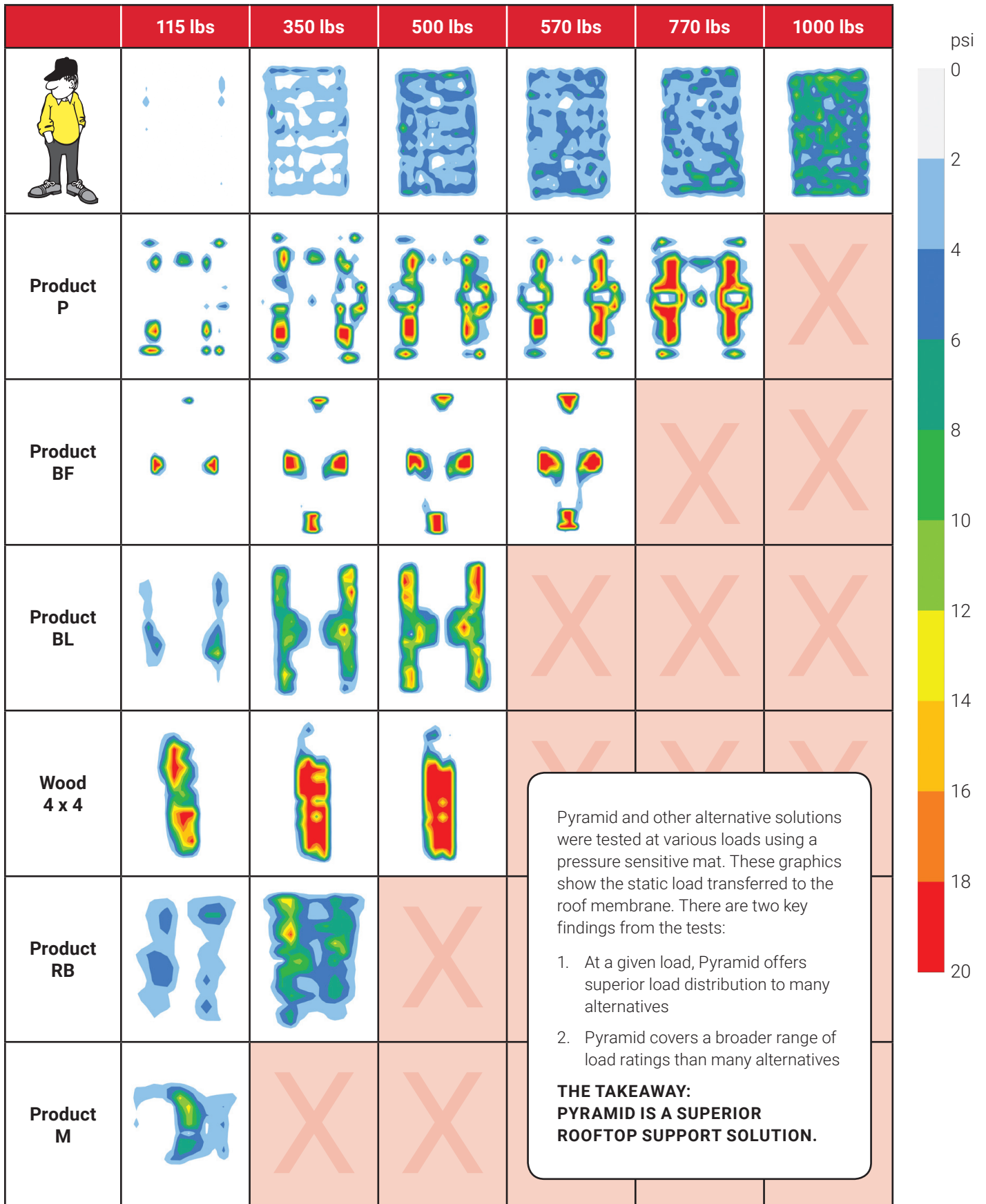
**Foam Bottom**


- Provides roof membrane compatibility
- Eliminates the need for a separation sheet

**nVent CADDY Quality and Innovations**

- More than 14 years of designing and building high-quality rooftop support solutions
- Continuously innovating for over 110 years

# Rooftop Supports: Load Distribution



 Product does not support load ratings at this level

# Pyramid ST Strut-Based Supports

Pyramid ST Strut-Based Supports offer an ideal solution for mounting electrical and mechanical applications to strut. Superior load distribution and a low abrasion foam interface combine to ensure that the roof membrane is protected despite varying roof surfaces and shifting caused by expansion and contraction.

- Provides superior load distribution, even with varying rooftop surfaces
- Ready to use out of the box, saving installation time and labor
- Compatible with roof surfaces including single ply, bituminous, metal and spray foam
- Foam bottom offers low abrasion interface for better roof membrane protection
- Hot-dip galvanized and UV stabilized for long lasting performance
- Supports green building requirements; thermoplastic bases are made from recycled material and can contribute to earning LEED credits



## Pyramid ST Fixed Strut Supports

Provides a fixed-height mounting platform with 6", 10", or 16" of usable strut length.

- Provides superior support for pipe, conduit, duct, cable tray and equipment
- Multiple sizes and load ratings offer the ability to tailor the solution to the application
- Easy to transport to the roof

Material: Polyethylene, Polypropylene, Steel  
Finish: Hot-dip galvanized  
Temperature: -50 to 150 °F  
Static Load Safety Factor: 3:1

Part Number	Strut Length	Height	Static Load
PSF6C	6"	4.8"	300 lb
PSF10C	10"	4.8"	1,000 lb
PSF10D	10"	6.4"	1,000 lb
PSF16C	16"	4.8"	1,500 lb
PSF16D	16"	6.4"	1,500 lb



# Pyramid ST Strut-Based Supports



## Pyramid ST Adjustable Strut Supports

Allows elevation changes of up to 18" off the roof surface with 10" or 16" of usable strut length.

- Height adjustability provides effective navigation of pipe, conduit, duct and cable tray around obstructions
- Multiple sizes and load ratings offer the ability to tailor the solution to the application

Material: Polyethylene, Polypropylene, Steel  
 Finish: Hot-dip galvanized  
 Temperature: -50 to 150 °F  
 Static Load Safety Factor: 3:1

Part Number	Strut Length	Height	Static Load
PSA10CH13	10"	6" – 13"	1,000 lb
PSA16AH18	16"	7" – 18"	1,500 lb

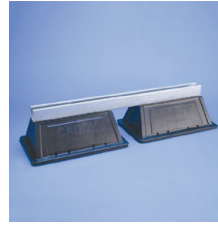
## TIP

For complete information on all parts, visit:  
[nVent.com/CADDY](http://nVent.com/CADDY)



**"We have standardized on Pyramid ST Series Supports for our cable tray installations. They are extremely simple to use and provide a lower total installed cost than wood blocks, concrete slabs, and other engineered solutions."**

Alain Lemaire, Achats et Réalisation | G2EI



## Pyramid ST Bridge Assemblies

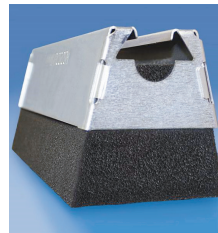
Provides a fixed-height mounting platform off the roof surface with 24" to 60" of usable strut length.

- Ideal for supporting multiple pipe runs, cable tray and air handling units
- Multiple sizes and load ratings offer the ability to tailor the solution to the application

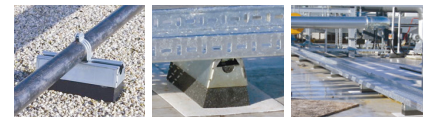
Material: Polyethylene, Polypropylene, Steel  
 Finish: Hot-dip galvanized  
 Temperature: -50 to 150 °F  
 Static Load Safety Factor: 3:1

Part Number	Strut Length	Height	Static Load
PSB24A	24"	5.6"	2,000 lb
PSB30A	30"	5.6"	2,000 lb
PSB36A	36"	5.6"	2,000 lb
PSB42A	42"	5.6"	3,000 lb
PSB48A	48"	5.6"	3,000 lb
PSB60A	60"	5.6"	3,000 lb

Static loads are assumed to be uniformly distributed.



## Also Available: Pyramid 50 Foam-Based Support



- Replaces slow and labor-intensive installation methods
- Supports pipe, conduit, cable tray and equipment on roofs and below raised floors
- Easily increase load capacity by combining similar Pyramid supports
- Protects the roof membrane while absorbing shock and vibration, without absorbing water
- Metal cover protects against weather and other environmental conditions, such as bird damage

Material: Polyethylene, Polypropylene, Steel  
 Static Load Safety Factor: 3:1

Part Number	Length	Height	Static Load
<b>Finish: Electro-galvanized</b>			
RPS50H4EG	10 3/8"	4"	50 lb
RPS50H6EG	10 3/8"	6"	50 lb
<b>Finish: Hot-dip galvanized</b>			
RPS50H4HD	10 3/8"	4"	50 lb
RPS50H6HD	10 3/8"	6"	50 lb

# Pyramid RL Roller-Based Supports

Pyramid RL Roller-Based Supports offer an ideal solution for mechanical piping systems. Long-lasting performance is ensured by providing polymeric rollers for corrosion free rotation. Pyramid RL Roller-Based Supports are specially designed to avoid formation of flat spots and seized rollers during expansion and contraction. Superior load distribution and a low abrasion foam interface combine to ensure that the roof membrane is protected despite uneven roof surfaces and shifting caused by expansion and contraction.

- Polymeric rollers ensure corrosion free rotation
- Foam bottom offers low abrasion interface for better roof membrane protection
- Compatible with roof surfaces including single ply, bituminous, metal and spray foam
- Ready to use out of the box, saving installation time and labor
- Hot-dip galvanized and UV stabilized for long lasting performance
- Supports green building requirements; thermoplastic bases are made from recycled material and can contribute to earning LEED credits



## Pyramid RL Fixed Roller Supports

Provides a fixed height roller to support up to 6" schedule 40 nominal pipe.

- Roller-based support designed specifically for rooftop applications
- Roller capability allows longitudinal movement of pipe, resulting from thermal expansion or contraction

Material: Polyethylene, Polypropylene, Steel

Finish: Hot-dip galvanized

Temperature: -50 to 150 °F

Static Load Safety Factor: 3:1

Part Number	Pipe Size	Height	Static Load
PRF2	2" Max	5.80"	100 lb
PRF3	3" Max	6.25"	250 lb
PRF6	6" Max	6.25"	600 lb

## SUPPORT ACCESSORY:



### Retainer Strap

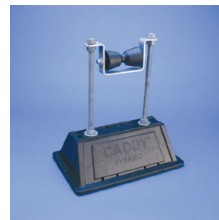
Provides additional support to ensure that the pipe stays in-line with the roller.

- Prevents pipe from being dislodged from roller supports
- Innovative twist-lock design allows for easy installation without requiring hardware removal

Material: Steel

Finish: Hot-dip galvanized

Part Number	Pipe Size
PRS2	2" Max
PRS3	3" Max
PRS6	6" Max



## Pyramid RL Adjustable Roller Supports

Adjustable height allows elevation changes up to 16" off the roof for up to 6" schedule 40 nominal pipe.

- Height-adjustable roller-based support designed specifically for rooftop applications
- Height adjustability allows for effective navigation of pipe around obstructions

Material: Polyethylene, Polypropylene, Steel

Finish: Hot-dip galvanized

Temperature: -50 to 150 °F

Static Load Safety Factor: 3:1

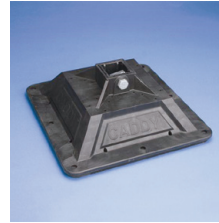
Part Number	Pipe Size	Height	Static Load
PRA3H12	3" Max	6" - 12"	250 lb
PRA6H16	6" Max	6 1/2" - 16"	600 lb



# Pyramid H-Frame

Pyramid H-Frame Series Support System is a fast and economical solution for a variety of rooftop applications where support height and width exceed those of the Pyramid ST or Pyramid RL series. It provides an ideal support solution for duct, large diameter pipe or cable tray. Superior load distribution and a low abrasion foam interface combine to ensure that the roof membrane is protected despite varying roof surfaces and shifting caused by expansion and contraction.

- Foam or rubber bottom offers low abrasion interface for better roof membrane protection
- Compatible with roof surfaces including single ply, bituminous, metal and spray foam
- Provides superior load distribution, even with varying rooftop surfaces
- Rubber rooftop interface ideal for solar panel array installations
- Hot-dip galvanized and UV stabilized for long lasting performance
- Accepts standard strut channels
- Supports green building requirements; thermoplastic bases are made from recycled material and can contribute to earning LEED credits



## Pyramid H-Frame Post Base

- Mounting hardware pre-installed in bases

Material: Polyethylene, Polypropylene, Steel  
 Finish: Hot-dip galvanized  
 Temperature: -30 to 130 °F  
 Static Load Safety Factor: 3:1

Part Number	Rooftop Interface	Strut Type	Height	Length / Width	Static Load
PHB	Foam	A	4.60"	12 3/8"	750 lb
PHBR	Rubber	A	4.66"	12 3/8"	750 lb



## Pyramid H-Frame Kit

- Kit includes 2 post bases with pre-installed mounting hardware, 6 bolts, 6 strut nuts, and 2 L-brackets to complete H-frame

Material: Polyethylene, Polypropylene  
 Temperature: -30 to 130 °F  
 Static Load Safety Factor: 3:1

Part Number	Rooftop Interface	Strut Type	Height	Length / Width	Static Load
PHK	Foam	A	4.60"	12 3/8"	1,500 lb
PHKR	Rubber	A	4.66"	12 3/8"	1,500 lb

Static load represents 750 lb (3,335 N) per post base. The end user must select and evaluate the strut framing to ensure the assembled H-frame can properly support the applied load.

### SUPPORT ACCESSORY:



#### PYRAMID H-FRAME HARDWARE KIT

- Kit includes 6 bolts, 6 strut nuts, and 2 L-brackets to build custom multi-tier H-frame assemblies

Material: Steel  
 Finish: Hot-dip galvanized

Part Number	Screw Diameter
HFRMHDW	M12

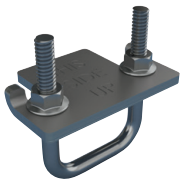


# Pyramid Equipment Supports

Pyramid Equipment Support is a fast, flexible and innovative system for supporting heavy-duty mechanical services on rooftop surfaces. Superior load distribution and a low abrasion foam interface combine to ensure that the roof membrane is protected despite varying roof surfaces and shifting caused by expansion and contraction.

- Supports green building requirements; thermoplastic bases are made from recycled material and can contribute to earning LEED credits

## SUPPORT ACCESSORY:



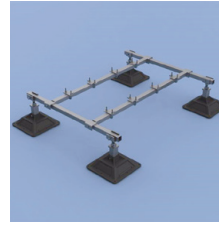
### PYRAMID EQUIPMENT SUPPORT CLAMP

Clamp to secure heavy-duty mechanical equipment when creating a custom frame out of strut.

- Ideal for use with strut channel type A and square tube to create custom equipment supports
- Slotted design offers fast and easy installation

Material: Steel  
Finish: Hot-dip galvanized

Part Number	Strut Type
PEC	A



### Pyramid Equipment Support Kit

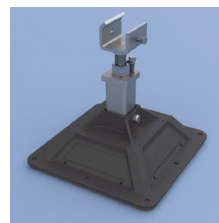
Includes all post bases, hardware and framing needed for an out of the box solution to construct a 1 m or 2 m equipment support.

- Kit includes post-base assemblies, frame and equipment-support clamps
- Assembles and adjusts to size and height in minutes by one person with one tool
- Innovative crossbar and equipment-support clamps enable quick assembly
- Integral foam pad provides gentle interface for all roof types
- Hot-dip galvanized and UV stabilized for long lasting performance
- Assembled support can be lifted as one unit and easily relocated
- Available in 4- or 6-post base configurations

Material: Steel, Polypropylene, Polyethylene  
Finish: Hot-dip galvanized  
Temperature: -30 to 130 °F  
Height: 12" – 18"  
Length: 62 1/2"

Part Number	Post Base	Width	Surface Area	Ultimate Static Load
PEK4B	12" x 4 pc	49 1/2"	575 in <sup>2</sup>	1,120 lb
PEK6B	12" x 6 pc	85 1/2"	862 in <sup>2</sup>	2,240 lb

Static load must be stable and uniformly distributed across frame.



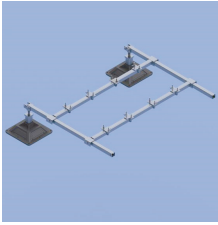
### Pyramid Equipment Support Post Base

Individual post base with height adjustable leg 12" to 18" gives you the flexibility to create your own equipment support with strut.

- Ideal for use with strut channel type A and U-shaped brackets to create custom equipment supports
- Height adjustable
- Innovative base design evenly distributes load to help prevent damage to roof membrane
- Base is manufactured from UV-stabilized thermoplastic material

Material: Steel, Polypropylene, Polyethylene  
Finish: Hot-dip galvanized  
Temperature: -30 to 130 °F  
Static Load Safety Factor: 3:1

Part Number	Height	Length / Width	Surface Area	Static Load
PEB	12" – 18"	12"	144 in <sup>2</sup>	750 lb



### Pyramid Equipment Support Frame Extension Kit

- Allows creation of custom equipment support lengths by attaching the Pyramid Extension Kit in series to a Pyramid Equipment Support Kit
- Kit includes two post-base assemblies, frame and equipment-support clamps for easy attachment to a Pyramid Equipment Support Kit
- Square tube and cross bars provide superior load and deflection capabilities over standard strut profiles
- Assembles and adjusts to size and height in minutes by one person with one tool
- Innovative crossbar and equipment-support clamps enable quick assembly
- Integral foam pad provides gentle interface for all roof types
- Hot-dip galvanized finish provides superior corrosion protection

Material: Steel, Polypropylene, Polyethylene  
 Finish: Hot-dip galvanized  
 Temperature: -30 to 130 °F  
 Height: 12" – 18"  
 Length: 62 1/2"

Part Number	Post Base	Width	Surface Area	Ultimate Static Load
PEKEF	12" x 2 pc	49 1/2"	288 in <sup>2</sup>	1,120 lb

Static load must be stable and uniformly distributed across frame.  
 Pyramid Equipment Support Frame Extension must be used in conjunction with a Pyramid Equipment Support Kit.

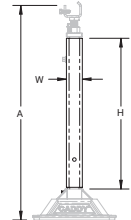


### Pyramid Equipment Support Height Extension

Height extension used to lift the frame up to 36" off the roof surface.

- Increases the height between the equipment support frame and roof deck
- Inserts directly into Pyramid Equipment Support Bases

Material: Steel  
 Finish: Hot-Dip Galvanized



Part Number	H Height	A Post Base Height with Extension	W Width
PEH31	22.38"	30" - 36"	2.36"

**"Labor represents over 50% of the costs on our projects. We chose to standardize on Pyramid Equipment Supports for our air handling unit installations, because one person can easily assemble and locate the support unit where required on the roof. This is a very well designed product that saves installation time & keeps me under budget."**

Ulf Engel, Dipl. -Ing. (FH) | ROKO-Klimatechnik



# Pyramid Crossovers and Walkways

The Pyramid Crossovers portfolio includes ladders, towers, bridges and platforms that can be combined to provide a safe and clear rooftop walkway. Individual pieces can be easily assembled to meet custom application needs. Superior load distribution and a low abrasion foam interface combine to ensure that the roof membrane is protected despite varying roof surfaces and shifting caused by expansion and contraction.

- Aluminum construction designed to withstand harsh environments
- Walking surfaces with serrated tread provides maximum slip resistance and drainage
- Modular design allows for easily configurable heights and lengths to address varying applications
- Stairs, platform and ladders are easily assembled yielding labor-saving, quick installations and level adjustments
- Interchangeable standard components for flexibility while providing safe access over piping, duct, equipment or other utilities on a roof surface
- Compliant with OSHA, Cal/OSHA and ANSI® standards

**“Our projects often require the installation of crossovers, walkways, and platforms to allow for easy and safe access across and over varying roof top structures. We have standardized on the Pyramid family because they are engineered to be sturdy and durable but are also extremely simple to install.”**

Tyler Doyle, Project Manager  
Environmental Roofing and Waterproofing



## Pyramid Crossover Ladders, 50°

Ladders at a 50° angle ranging from two steps with a height of 20” to six steps with a height of 60”.

- Standard angle ladders provide easy changes in elevation
- Pyramid bases provide superior load distribution and roof membrane compatibility
- Foam bottom offers low abrasion interface for better roof membrane protection

Material: Aluminum, Polypropylene, Polyethylene

Part Number	Height	Width	Depth	Step Height
PCL50S2	62”	52.4”	22.9”	10”
PCL50S3	72”	52.4”	36.1”	10”
PCL50S4	82”	52.4”	44.5”	10”
PCL50S5	92”	52.4”	52.9”	10”
PCL50S6	102”	52.4”	61.3”	10”



## Pyramid Crossover Ladders, 90°

Ladders at a 90° angle ranging in height from 20” to 60”.

- Vertical Ladders ideal for tight spaces
- Pyramid bases provide superior load distribution and roof membrane compatibility
- Foam bottom offers low abrasion interface for better roof membrane protection

Material: Aluminum, Polypropylene, Polyethylene

Part Number	Height	Width	Depth	Step Height
PCL90S2	62”	52.4”	3”	12”
PCL90S3	72”	52.4”	3”	12”
PCL90S4	82”	52.4”	3”	12”
PCL90S5	92”	52.4”	3”	12”
PCL90S6	102”	52.4”	3”	12”



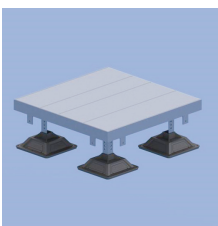
### Pyramid Crossover Support Towers

Supports for walkway systems ranging in height from 20" to 60".

- Additional support towers ideal for supporting long walkways at varying heights
- Pyramid bases provide superior load distribution and roof membrane compatibility
- Foam bottom offers low abrasion interface for better roof membrane protection

Material: Aluminum, Polypropylene, Polyethylene

Part Number	Height	Width	Depth
PCT20	40"	52.9"	2"
PCT30	50"	52.9"	2"
PCT40	60"	52.9"	2"
PCT50	70"	52.9"	2"
PCT60	80"	52.9"	2"



### Pyramid Crossover Platform

Provides four height adjustable legs and the ability to interlock sections for customizability.

- Height adjustable interlocking platforms allow for quick and easy installation of a custom pathway across rooftop surfaces
- Protect roof surfaces by providing a clearly defined pathway

Material: Aluminum, Polypropylene, Polyethylene

Part Number	Height	Width	Depth
PCP36	11" – 14"	36"	36"



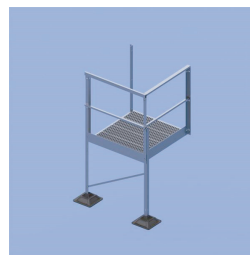
### Pyramid Crossover Bridge

Bridge span with handrails connects easily in series and to Pyramid Crossover Ladders to provide an effective walkway.

- Standard bridge spans that can be combined to create custom pathway lengths

Material: Aluminum

Part Number	Height	Width	Length
PCB36	44"	42"	40"



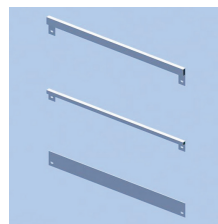
### Pyramid Crossover Bridge Turn Kit

Provides supports, pathway and handrails to make a 90° turn at heights ranging from 20" to 60".

- Turn bridges allow for configurations beyond a straight pathway, "L", "U" or "Z" pathways can be created by using turn bridges
- Pyramid bases provide superior load distribution and roof membrane compatibility
- Foam bottom offers low abrasion interface for better roof membrane protection

Material: Aluminum, Polypropylene, Polyethylene

Part Number	Height	Width	Depth
PCB36H20	62"	52.5"	47.1"
PCB36H30	72"	52.5"	47.1"
PCB36H40	82"	52.5"	47.1"
PCB36H50	92"	52.5"	47.1"
PCB36H60	102"	52.5"	47.1"



### Pyramid Guardrail Kit

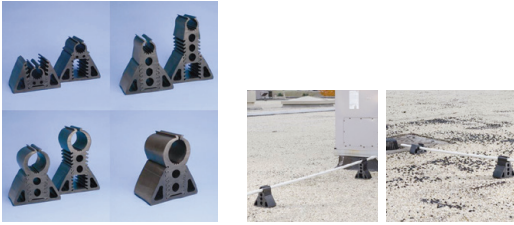
Provides extra handrails for creating custom configurations.

- Use an extra guardrail kit to block off the end of a pathway or create custom pathway configurations while ensuring all safety criteria are met

Material: Aluminum

Part Number	Length
PCGK	42"

# Pyramid EZ Rubber-Based Supports



Feature a wide platform base design to provide reliable support and distribute load across roof surface. These versatile supports are fast and easy to install compared to wood blocks and metal straps.

- Quick height adjustment accommodates for uneven roofs or sloped condensate lines
- No tools or fasteners needed; fast snap-on installation
- Design sheds water and helps reduce pipe corrosion
- Roof-friendly; made of UV-stabilized EPDM material

Material: EPDM-SBR rubber

Part Number	Rigid Conduit/ Pipe Size	Height	Ultimate Static Load
RPSE1H24	1"	1 3/4" – 4"	170 lb
RPSE1H57	1"	5" – 7"	170 lb
RPSE2H46	2"	4" – 6"	250 lb
RPSE4H46	4"	4" – 6"	400 lb

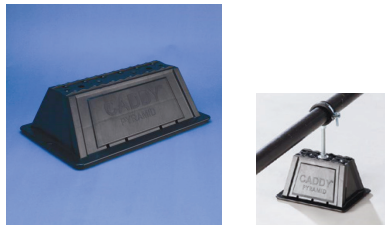
Ultimate load at 1/4" (6.35 mm) deflection. Contact project or roofing engineer for maximum allowable load on individual project roof system.



**"As a roofing membrane manufacturer, the products that we choose for our own roof must reflect the same level of quality and durability as our brand. We chose the Pyramid EZ Series Rooftop Support System during our office roof renovation to replace the original wood blocks that held up the gas lines. They were economical, simple to install, and contributed to the general aesthetics of the roof. Just like our installing contractor said, 'These nVent CADDY Supports are pretty sweet!'"**

Jerry Beall, Product and Technical Specialist  
FiberTite Roofing Systems,  
Seaman Corporation

# Pyramid Universal Support



- Captive stainless steel nuts allow for custom attachment methods to the support base including easy attachment of stainless steel strut, threaded rod or other project-specific hardware
- Foam bottom offers low abrasion interface for better roof membrane protection
- Compatible with roof surfaces including single ply, bituminous, metal and spray foam
- Provides superior load distribution, even with varying rooftop surfaces
- Multiple sizes and load ratings offer the ability to tailor the solution to the application
- Base is manufactured from UV-stabilized thermoplastic material
- Supports green building requirements; thermoplastic bases are made from recycled material and can contribute to earning LEED credits

Material: Polyethylene; Polypropylene; Stainless Steel 18-8  
 Temperature : -50 to 150 °F  
 Static Load Safety Factor: 3:1

Part Number	Length	Width	Height	Thread Size	Ultimate Static Load
PBU6	8"	6"	4"	(3) 3/8"-16	300
PBU10	12 1/2"	8"	4"	(2) 3/8"-16	1,000
PBU16	19"	8"	4"	(2) 3/8"-16	1,500

# Pyramid 25 Pipe and Conduit Support



- Lightweight plastic construction
- UV resistant, designed and tested for outdoor use
- No tools or fasteners needed for installation
- Rounded edges to help protect the roof membrane

Material: Acrylonitrile Butadiene Styrene

Part Number	Height	Static Load
PPRPS25H4	3 5/8"	25 lb
PPRPS25H6	5 5/8"	25 lb

**“The Pyramid family allows us to streamline our project operations while delivering an aesthetically pleasing product for our clients.”**

Kyle Laubach, VP of Operations  
 Environmental Roofing and Waterproofing

ANSI is a registered trademark of American National Standards Institute.  
 YouTube is a registered trademark of Google Inc.

**WARNING:** nVent products shall be installed and used only as indicated in nVent’s product instruction sheets and training materials. Instruction sheets are available at nVent.com/CADDY and from your nVent customer service representative. Improper installation, misuse, misapplication or other failure to completely follow nVent’s instructions and warnings may cause product malfunction, property damage, serious bodily injury and death and/or void your warranty.

Our powerful portfolio of brands:

**CADDY ERICO HOFFMAN RAYCHEM SCHROFF TRACER**



[nVent.com/CADDY](https://nVent.com/CADDY)

©2018 nVent. All nVent marks and logos are owned or licensed by nVent Services GmbH or its affiliates. All other trademarks are the property of their respective owners. nVent reserves the right to change specifications without notice.

Caddy-SB-FM1217B-FM137LT14NAEN-EN-1805